



ANTIQUE  
*Cameo*  
GALLERY

UNMOUNTED CORAL & ANGEL SKIN



Let me introduce my family's passion for the past four generations: My Old Cameo collection contains 10 different collections:

1. Solid Gold Framed
2. Solid Silver Sterling & Coin Silver Framed
3. Gold filled • Gold Plated • Gold Washed Framed
4. Unmounted
5. Unmounted Cameos with Diamonds
6. Unmounted Modern Cameos
7. Unmounted Coral & Angel Skin Cameos
8. Unmounted Landscapes
9. Unmounted Mather Pearl
10. Conch Shells

Cameos date back more than 5,000 years, with each cameo reflecting the culture and style of its time period. They were also used as government assets in the many countries around the world, and are considered a reliable investment, as prices of antique, high quality cameos are predicted by many collectors to continue to rise. Most of the items represented in my collection are from the end of the 19th to the beginning of the 20th centuries. I also have some cameos from as early as the 18th century as well as a few modern pieces. The majority of my collection was produced in Italy and England, followed by pieces from the United States, Italy, France, Russia and Germany. The majority were carved from Carnelian and Sardonyx Sea Shell as well as Mother of Pearl Shell and corals. The collection also contains some hard stone cameos from agate, opal and bone. Using my background as a Graphic Artist and Art Historian, I established criteria which guided the creation of my cameo collection. The major criteria were craftsmanship and esthetic's. Secondary criteria included historical value, followed by materials, including metal, stone, bone, etc. The collection also comes with a catalog which includes a full description and historical background of each piece, and was meticulously created as my family amassed this collection over the years. This well organized, beautifully created catalog will help the collectors to keep track of this unique and valuable asset, whose value will only increase with time as prices of quality antique cameos continue to rise in the present time.

**AntiqueCameoGallery.com**



**Prices for this collection are 3-4 times less than retail prices.**

You can verify my prices in the book and on line as well, by Clements, Monica L., and Patricia R. Clements. *Cameos, A Pocket*

*et Guide*. Revised 3rd ed., Atglen, PA, Schiffer, 2011.or use the following on line reference: <https://www.youtube.com/watch?v=PK0x89vSjvs>



### UNMOUNTED CORAL & ANGEL SKIN

**T**his catalog represents the **UNMOUNTED CORAL & ANGEL SKIN COLLECTION**, from "The Antique Cameo Gallery Collection LLC." This collection includes **ONLY** hand-carved cameos. The big part of this collection was purchased La Clerk Collection from Paris, France, as well as Elite Collection of UK. The major criteria for this collection included craftsmanship and esthetic's. The collection also comes with a catalog highlighting the artistry and history of each piece. According to cameo experts, the prices of cameos have doubled every 6-7 years and will continue to do so. The price of this collection is 2-4 times less than regular retail price, in order to sell it in one piece. Big percentage of this collection - Museum Quality.







**28x22(mm.) Hand carved light Coral stone double female portrait  
Museum Quality from UK Antique collection. Circa 1915-1930.**



Museum Quality Edwardian carving light Coral stone. Female double portrait. Weight - 4.63 grams. Measurements - 1-1/8" tall and 7/8" wide. The Perfect Antique conditions.

PRICE - \$USD 179.00



**29x20(mm.) Rose & White Coral Italian Bacchante  
Greatly hand carved & signed. Circa 1910-1920**



Hand carved and signed by Artist Rose & White Coral Edwardian Shell - Italian image of Bacchante from 1910th. Measurements is 3/4" width by 1-1/8" height. Weight is 4.48 grams. The Perfect Antique condition from La Clerk Collection.

PRICE - \$USD 99.00



**28x21(mm.) Rose & White Coral Italian Psyche Goddess  
Greatly hand carved & signed. Circa 1910-1920**



Greatly Hand carved and signed by the Artist Coral Edwardian Shell image of Goddess sensitive love Psyche from 1910th. Measurements is 7/8" width by 1-1/8" height. Weight is 4.39 grams. The Perfect Antique condition from La Clerk Collection, Paris, France.

PRICE - \$USD 119.00



**30x22(mm.) High relief image of Goddess Psyche  
From 1915-1930 well hand carved Coral.**



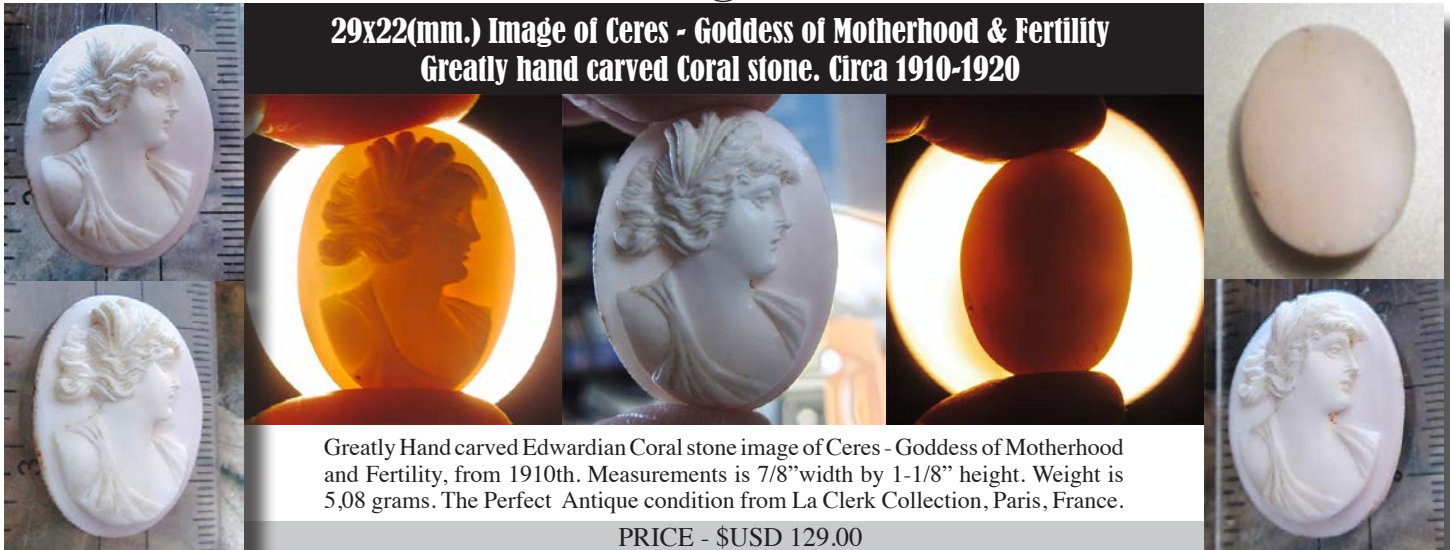
Hand carved Rose & White Coral Edwardian Shell - Goddess of Psyche from 1920th. Measurements is 22mm. width by 30mm. height. & 6mm. deep. Weight is 5.7 grams. The Perfect Antique condition from La Clerk Collection.

PRICE - \$USD 99.00





**29x22(mm.) Image of Ceres - Goddess of Motherhood & Fertility  
Greatly hand carved Coral stone. Circa 1910-1920**



Greatly Hand carved Edwardian Coral stone image of Ceres - Goddess of Motherhood and Fertility, from 1910th. Measurements is 7/8"width by 1-1/8" height. Weight is 5,08 grams. The Perfect Antique condition from La Clerk Collection, Paris, France.

PRICE - \$USD 129.00



**29x21(mm.) Victorian/Edwardian Coral Bacchante image  
Greatly hand carved Museum piece. Circa 1900-1915**



Greatly hand carved Victorian/Edwardian Coral stone image of Bacchante, priestess of Bacchus, from 1910th. Measurements is 7/8"width by 1-1/8" height. Weight is 6,74 grams. The Perfect Antique condition from La Clerk Collection, Paris, France.

PRICE - \$USD 149.00



**30x23(mm.) High relief image of Ceres Goddess  
From 1915-1930 well hand carved Coral.**

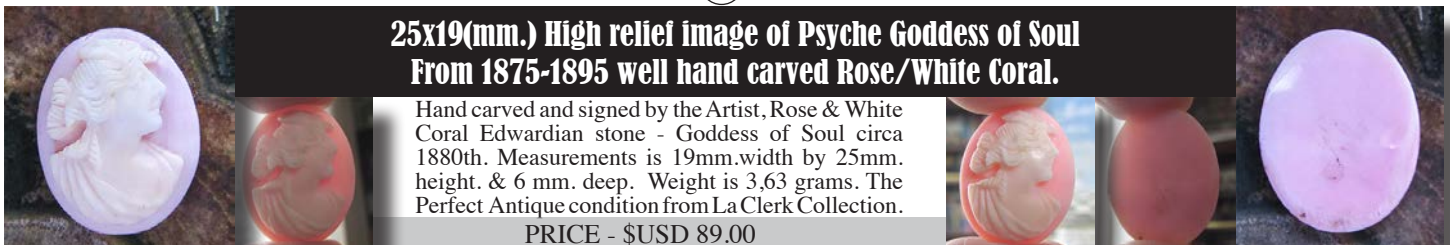


Hand carved and signed Rose & White Coral Edwardian stone - Goddess of Motherhood and fertility Ceres from 1920th. Measurements is 22mm.width by 30mm. height. & 6 mm. deep. Weight is 5,7 grams. The Perfect Antique condition from La Clerk Collection.

PRICE - \$USD 99.00



**25x19(mm.) High relief image of Psyche Goddess of Soul  
From 1875-1895 well hand carved Rose/White Coral.**



Hand carved and signed by the Artist, Rose & White Coral Edwardian stone - Goddess of Soul circa 1880th. Measurements is 19mm.width by 25mm. height. & 6 mm. deep. Weight is 3,63 grams. The Perfect Antique condition from La Clerk Collection.

PRICE - \$USD 89.00





**25x20(mm.) Image of Psyche Goddess of Soul & Sex  
Circa 1875-1895 well hand carved White Coral.**

Hand carved by the Artist, White Coral Victorian stone - Goddess of Soul Psyche, circa 1880th. Measurements is 20mm. width by 25mm. height. & 5 mm. deep. Weight is 3,48 grams. The Perfect Antique condition from La Clerk Collection.

PRICE - \$USD 89.00



**20x17(mm.) Image of Bacchante. Priestess of Bacchus,  
Circa 1850-1875 well hand carved White Coral.**

Hand carved White Coral Victorian Stone - Goddess of Soul Psyche, circa 1860th. Measurements is 17mm. width by 20mm. height & 5 mm. deep. Weight is 1,77 grams. The Perfect Antique condition from La Clerk Collection, Paris, France.

PRICE - \$USD 79.00



**21(mm.) Diameter image of Mercury/Hermes - God of Trade  
Greatly hand carved white Coral stone. Circa 1890-1920**

Greatly Hand carved Late Victorian/Edwardian 1890-1910 White Coral stone image of Mercury/Hermes - God of Trade from Roman/Greek Mythology. Measurements is 7/8" in the diameter. Weight is 2,68 grams. The Perfect Antique condition from La Clerk Collection, Paris, France.

PRICE - \$USD 99.00



**25x20(mm.) Rose & White Coral Classic Profile  
Greatly hand carved Edwardian. Circa 1915**

Hand carved Classic Rose & White Coral Edwardian stone - from 1910th. Measurements is 3/4" width by 1" height. Weight is 2,96 grams. The Perfect Antique condition from La Clerk Collection, Paris, France.

PRICE - \$USD 110.00



**24x18(mm.) White Coral Classic Profile Circa 1910  
Greatly hand carved Edwardian.**

Hand carved Classic White Coral Edwardian stone - from 1910th. Measurements is 3/4" width by 1" height. Weight is 2,74 grams. The Perfect Antique condition from La Clerk Collection, Paris, France.

PRICE - \$USD 99.00





**23x17(mm.) High relief image of Goddess Psyche From 1910-1920  
Museum Quality hand carved White-Rose Coral stone.**

Hand carved Rose & White Coral Edwardian Shell - Goddess of Psyche from 1920th. Measurements is 17mm. width by 23mm. height. & 6 mm. deep. Weight is 3,5 grams. The Perfect Antique condition from La Clerk Collection.

PRICE - \$USD 149.00



**15x12 (mm.) Roman Goddess Ceres circa 1890 Victorian  
Quality hand carved White-Rose Coral stone.**

Two Hand carved Rose & White Coral Victorian Stone - Goddess of Motherhood from 1890-1910. Signed by the Artist. Measurements is 12mm. by 15mm. . Weight is 1,95 grams. The Perfect Antique condition from La Clerk Collection.

PRICE - \$USD 49.00



**17x13 (mm.) Roman Goddess Ceres & Flora circa 1890 Victorian  
Quality hand carved & signed White-Rose Coral stone.**

Two Hand carved Rose & White Coral Victorian Stone - Goddesses Ceres & Flora 1890-1910. Signed by the Artist. Measurements is 13mm. by 17mm. . Weight is 3,42 grams. The Perfect Antique condition from La Clerk Collection.

PRICE - \$USD 55.00



**15x12 (mm.) Ancient Roman's profiles Man & Woman  
Hand carved circa 1890 Victorian White Coral stone.**

Two Hand carved Rose & White Coral Victorian Stone - Goddesses Ceres & Flora 1890-1910. Signed by the Artist. Measurements is 13mm. by 17mm. . Weight is 3,42 grams. The Perfect Antique condition from La Clerk Collection.

PRICE - \$USD 39.00



**16x12 (mm.) Roman Goddess Ceres & Flora circa 1890 Victorian  
Quality hand carved & signed White Coral stone.**

Two Hand carved White Coral Victorian Stone - Goddesses Ceres & Flora 1890-1910. Signed by the Artist. Measurements is 12mm. by 16mm. . Weight is 2,13 grams. The Perfect Antique condition from La Clerk Collection.

PRICE - \$USD 69.00



**16x12 (mm.) Roman Goddess Flora & Venus circa 1890 Victorian  
Quality hand carved & signed White Coral stone.**

Two Hand carved White Coral Victorian Stone - Goddesses Venus & Flora 1890-1910. Measurements is 12mm. by 16mm. . Weight is 2,13 grams. The Perfect Antique condition from La Clerk Collection, Paris France.

PRICE - \$USD 65.00





**16x12 (mm.) Roman Goddess Ceres & Psyche Victorian circa 1890  
Quality hand carved & signed Rose/White Coral stone.**

Two hand carved White Coral Victorian Stones - Goddesses Ceres & Psyche 1890-1910. Measurements is 12mm. by 16mm. . Weight is 2.87 grams. The Perfect Antique condition from La Clerk Collection.

PRICE - \$USD 79.00



**18x13 (mm.) Goddess Venus & Psyche circa 1890 Victorian  
Quality carved Rose/White high relief Coral stone.**

Two hand carved Rose & White Coral Stones - Goddesses Venus & Psyche from the 1890-1910. Measurements is 13mm. by 18mm. . Weight is 2.49 grams. The Perfect Antique condition from La Clerk Collection, Paris, France.

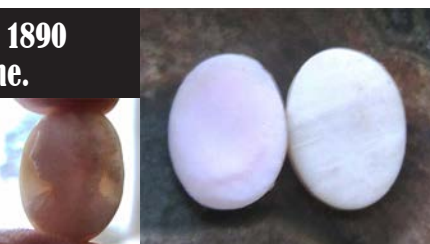
PRICE - \$USD 79.00



**15x11 (mm.) Roman Goddess Ceres & Psyche circa 1890  
Quality Victorian carved Rose/White Coral stone.**

Two hand carved Angel Skin(?)/Coral Victorian Stones - Goddesses Ceres & Psyche 1890 - 1910. Measurements is 11mm. by 15mm. . Weight is 2.41 grams. The Perfect Antique condition from La Clerk Collection.

PRICE - \$USD 69.00



**16x12(mm.) Roman Goddess Ceres & Venus circa 1870  
Quality carved Victorian White Coral stone.**

Hand carved 1860 - 1880 Coral Victorian Stones - Goddesses Ceres & Venus. Measurements is 12mm. by 16mm. . Weight is 1.5 grams. The Perfect Antique condition from La Clerk Collection, France.

PRICE - \$USD 79.00



**15x10(mm.) Classic Rome profiles circa 1870  
Victorian Quality carved couple Coral stones.**

1860 - 1880 Coral Stones - Well Hand carved Victorian profiles. Measurements is 10mm. by 15mm. . Weight is 1.83 grams. The Perfect Antique condition from La Clerk Collection, France.

PRICE - \$USD 69.00



**16x12 (mm.) Circa 1890-1910 Two Roman Goddess Psyche  
Victorian /Edwardian Quality carved Rose/White Coral stone.**

1890 - 1910 Coral White/Rose Stones - Well Hand carved Victorian profiles of Psyche - Goddess of Soul. Measurements is 12mm. by 16mm. . Weight is 2.24 grams. The Perfect Antique condition from La Clerk Collection, France.

PRICE - \$USD 69.00



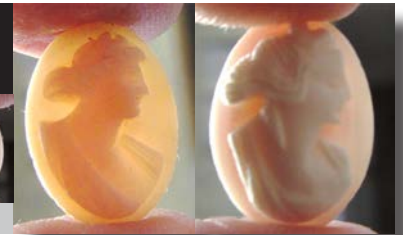




**16x12 (mm.) Circa 1890-1910 Selena Goddess of Moon  
Victorian hand carved Rose/White Coral stones.**

Two hand carved Rose/White Coral Victorian Stones - Selena Goddess of Moon 1890 - 1910. Measurements is 12 mm. by 16 mm. . Weight is 2.05 grams. The Perfect Antique condition from La Clerk Collection.

PRICE - \$USD 79.00



**18x13 (mm.) Circa 1890-1910 Two Classic Great Profiles  
Victorian hand carved Rose/White Coral stones.**

Two greatly hand carved Rose/White Coral Victorian Stones - 1890 - 1910. Measurements is 12 mm. by 16 mm. . Weight is 2.51 grams. The Perfect Antique condition from La Clerk Collection, France.

PRICE - \$USD 95.00



**17x12 (mm.) Circa 1890-1910 Ceres & Psyche Roman Goddess  
Victorian hand carved Rose/White Coral stones.**

Two hand carved Rose/White Coral Victorian Stones - Psyche and Ceres Goddesses of 1890 - 1910. Measurements is 12 mm. by 16 mm. . Weight is 2.44 grams. The Perfect Antique condition from La Clerk Collection.

PRICE - \$USD 55.00



**17x13 (mm.) Couple Victorian 1890-1910 Psyche Goddess  
Greatly hand carved Rose/White Coral stones.**

Two hand carved Rose/White Coral Victorian Stones - Psyche Goddess from 1890 - 1910. Measurements is 13 mm. by 17 mm. . Weight is 2.28 grams. The Perfect Antique condition from La Clerk Collection.

PRICE - \$USD 79.00



**19x13 (mm.) Circa 1890-1910 Classic Psyche Profile  
Victorian hand carved White Coral stone.**

Really greatly hand carved White Coral Victorian Stones - 1890 - 1910. Measurements is 12 mm. by 16 mm. . Weight is 0.69 grams. The Perfect Antique condition from La Clerk Collection, France.

PRICE - \$USD 55.00



**18x13 (mm.) Circa 1890-1910 Ceres & Psyche Roman Goddess  
Great Victorian hand carved White/Rose Coral stones.**

Two hand carved Rose/White Coral Victorian Stones - Psyche and Ceres Goddesses of 1890 - 1910. Measurements is 13 mm. by 18 mm. . Weight is 2.44 grams. The Perfect Antique condition from La Clerk Collection.

PRICE - \$USD 79.00



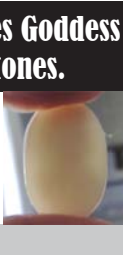




**20x14 (mm.) Couple Victorian 1890-1910 Ceres Goddess  
Greatly hand carved Rose/White Coral stones.**

Two hand carved Rose/White Coral Victorian Stones - Ceres Goddess from 1890 - 1910. Measurements is 14 mm. by 20 mm. . Weight is 3.38 grams. The Perfect Antique condition from La Clerk Collection.

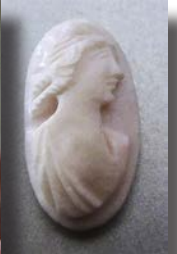
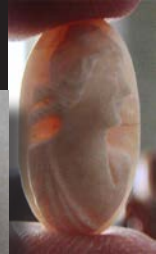
PRICE - \$USD 99.00



**21x11 (mm.) Couple Goddesses - Ceres & Psyche  
Hand carved Rose/White Coral stones 1890-1910**

Two hand carved Rose/White Coral Victorian Stones - Ceres & Psyche Goddess from 1890 - 1910. Measurements are 11 mm. by 21 mm. . Weight is 3.54 grams. The Perfect Antique condition from La Clerk Collection.

PRICE - \$USD 69.00



**20x10 & 18x10 (mm.) Couple Psyche Goddesses -  
Hand carved Rose/White Coral stones 1890-1910**

Two hand carved Rose/White Coral Victorian Stones - Psyche Goddess from 1890 - 1910. Measurements are 10 mm. by 20 mm. and 10mm. by 18 mm. The total weight is 3.54 grams. The Perfect Antique condition from La Clerk Collection.

PRICE - \$USD 79.00



**20x18 (mm.) Circa 1890-1910 Classic Ceres Goddess Profile  
Victorian hand carved White Coral stone. Signed.**

Really greatly hand carved and signed by the Artist White/Rose Coral Victorian Stone , circa 1890 - 1910 image of Ceres - roman goddess of Fertility and Motherhood. Measurements is 20 mm. by 18 mm. . Weight is 1.93 grams. The Perfect Antique condition from La Clerk Collection, France.

PRICE - \$USD 55.00



**25x13(mm.) Roman Goddesses Selena & Flora circa 1890  
Quality carved Victorian White & Rose Coral stones.**

Hand carved and signed by Artists circa 1890-1910 Coral Victorian Stones - Goddesses Selena (Goddess of Moon) & Flora (Goddess of Flowers). Measurements is 25mm. by 13mm. . Weight is 3 grams. The Perfect Antique condition from La Clerk Collection.

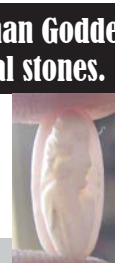
PRICE - \$USD 89.00

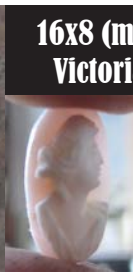


**13x6 (mm.) Circa 1890-1910 3 Psyche Roman Goddess  
Victorian hand carved White/Rose Coral stones.**

Three hand carved Rose/White Coral Victorian Stones - Psyche Goddess of Soul from 1890 - 1910. Measurements is 13-14 mm. by 6-7 mm. . Total weight is 1.19 grams. The Perfect Antique condition from La Clerk Collection.

PRICE - \$USD 75.00

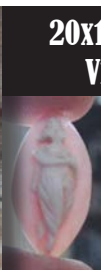




**16x8 (mm.) Circa 1890-1910 Classic Psyche Profile  
Victorian hand carved Rose/White Coral stone.**

Greatly hand carved White Coral Victorian Stone- Psyche Goddess - 1890 - 1910. Measurements is 8 mm. by 16 mm. . Weight is 0.65 grams. The Perfect Antique condition from La Clerk Collection, France.

PRICE - \$USD 45.00



**20x10 (mm.) Circa 1890-1910 4 Girls Dancers +1 extra  
Victorian hand carved White/Rose Coral stones.**

Four hand carved Rose/White Coral Victorian Stones - 4 Dancing Girls + Psyche goddess from 1890 - 1910. Measurements is 20 mm. by 10 mm. . Total weight is 4.64 grams. The Perfect Antique condition from La Clerk Collection.



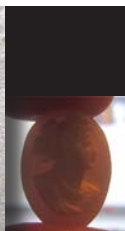
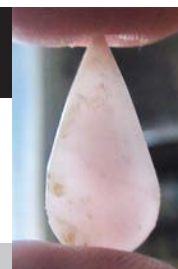
PRICE - \$USD 95.00



**22x11 (mm.) Circa 1890-1910 Classic Psyche Profile  
Victorian hand carved Angel Skin or Coral stone.**

Greatly hand carved White Angel Skin Coral Victorian Stone- Psyche Goddess - 1890 - 1910. Measurements is 22mm. by 11mm. . Weight is 0.75 grams. The Perfect Antique condition from La Clerk Collection, France.

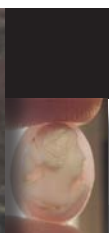
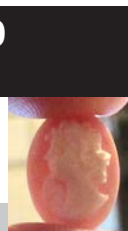
PRICE - \$USD 49.00



**15x10(mm.) Two Roman profiles circa 1920 -1930  
Quality carved White & Rose Coral stones.**

Two hand carved circa 1920 - 1930 Coral Stones Measurements is 15mm. by 10mm. . Total weight is 1.61 grams. The Perfect Antique condition from La Clerk Collection, Paris, France.

PRICE - \$USD 69.00



**14x10(mm.) Two Roman profiles circa 1900 -1910  
Hand carved White & Rose Coral stones.**

Two hand carved circa 1900 - 1910 Coral Stones Measurements is 14mm. by 10mm. . Total weight is 1.24 grams. The Perfect Antique condition from La Clerk Collection, Paris, France.

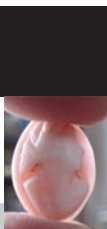
PRICE - \$USD 69.00



**14x10(mm.) Two Roman profiles circa 1900 - 1910  
Great hand carved White & Rose Coral stones.**

Two Great hand carved circa 1900 - 1910 Coral Stones Measurements is 14mm. by 10mm. . Total weight is 1.24 grams. The Perfect Antique condition from La Clerk Collection, Paris, France.

PRICE - \$USD 79.00







**12x9 (mm.) Circa 1890-1910 Classic Selena Profile  
Victorian Museum hand carved Coral stone.**

Museum Quality high relief White Coral Stone - Selena Goddess of Moon. Circa 1890 - 1910 petite hand carved Victorian. Measurements is 12 mm. by 9 mm. . Weight is 0.6 grams. The Perfect Antique condition from La Clerk Collection, France.

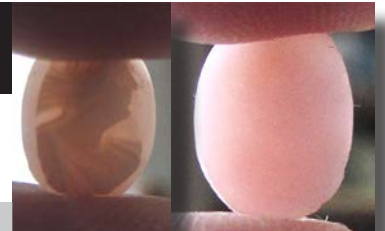
PRICE - \$USD 59.00



**10x8 (mm.) Tiny Victorian 1890-1910 Classic Profile  
Intricately detailing hand carved & signed Coral stone.**

Quality detailing small high relief White Coral Stone - Selena Goddess of Moon. Circa 1890 - 1910 petite (10 mm. by 8 mm.) Hand carved Victorian. . Weight is 0.27 grams. The Perfect Antique condition from La Clerk Collection, France.

PRICE - \$USD 59.00



**14x10(mm.) Two Roman Goddess Psyche & Ceres  
Hand carved White & Rose Coral circa 1900-1910.**

Two Great hand carved goddesses Psyche (Soul) and Ceres (Fertility), circa 1900 - 1910 Rose/White Coral Stones. Measurements is 14mm. by 10mm. . Total weight is 1.68 grams. The Perfect Antique condition from La Clerk Collection, Paris, France.

PRICE - \$USD 79.00



**14x10 (mm.) Circa 1890-1910 Ceres & Psyche Roman Goddess  
Victorian hand carved Rose/White Coral stones.**

Two hand carved Rose/White Coral Victorian Stones - Psyche and Ceres Goddesses of 1890 - 1910. Measurements is 10 mm. by 14 mm. . Weight is 1.36 grams. The Antique condition from La Clerk Collection.

PRICE - \$USD 45.00



**18x13 (mm.) Beauties circa 1930-1940 WWII epoch  
Hand carved Rose/White Coral stones.**

Two hand carved Rose/White Coral Beauty from the WWII (1930 - 1940). Measurements is 18 mm. by 13 mm. . Weight is 2.43 grams. The Antique condition from La Clerk Collection.

PRICE - \$USD 55.00



**18x13 (mm.) Circa 1930-1940 WWII epoch profiles  
Hand carved, signed Rose/White Coral stones.**

Two hand carved Rose/White Coral Beauty from the WWII (1930 - 1940). Measurements is 18 mm. by 13 mm. . Weight is 2.16 grams. The Antique condition from La Clerk Collection.

PRICE - \$USD 55.00





**14x10(mm.) Great images two Roman Goddess Psyche & Ceres  
Hand carved White & Rose Coral circa 1900-1910.**

Two Great hand carved goddesses Psyche (Soul) and Ceres (Fertility), circa 1900 - 1910 Rose/White Coral Stones. Measurements is 14mm. by 10mm. . Total weight is 1.27 grams. The Perfect Antique condition from La Clerk Collection, Paris, France.

PRICE - \$USD 89.00



**14x10(mm.) Two images of Roman Goddess Psyche  
Hand carved & signed Coral stones circa 1900-1910.**

Two Great hand carved and signed goddess Psyche (Soul) , circa 1900 - 1910 Rose/White Coral Stones. Measurements is 14mm. by 10mm. . Total weight is 1.55 grams. The Perfect Antique condition from La Clerk Collection, Paris, France.

PRICE - \$USD 79.00



**20x15 (mm.) Circa 1890-1910 Classic Venus Profile  
Victorian Museum hand carved Coral stone.**

Quality detailing small high relief White Coral Stone - Venus Goddess of Love. Circa 1890 - 1910 petite (20 mm. by 15 mm.) Hand carved Victorian. . Weight is 2.25 grams. The Perfect Antique condition from La Clerk Collection, France.

PRICE - \$USD 99.00



**20x15(mm.) Two images of Roman ancient women  
Hand carved Coral stones circa 1890-1910.**

Two Greatly hand carved Ancient Roman women, circa 1890 - 1910 White Coral Stones. Measurements is 20mm. by 15mm. . Total weight is 3.14 grams. The Perfect Antique condition from La Clerk Collection, Paris, France.

PRICE - \$USD 89.00



**18x13(mm.) Two images of Roman Goddess Ceres  
Circa 1900-1910 hand carved Coral stones.**

Two high relief hand carved Rose/White Coral Stone images of Ceres (1900 - 1910) Goddess of Motherhood. Measurements is 18 mm. by 13 mm. . Weight is 3.27 grams. The Antique condition from La Clerk Collection.

PRICE - \$USD 89.00



**20x15(mm.) Two images of ancient Roman Goddesses  
Hand carved Coral stones circa 1900-1910.**

Two high relief well hand carved Rose/White Coral Stone images of (1900 - 1910) Goddess. Measurements is 20 mm. by 15 mm. . Weight is 4.12 grams. The Antique condition from La Clerk Collection.

PRICE - \$USD 89.00







**19x14(mm.) Two images of Roman Goddess Ceres & Psyche  
Circa 1900-1910 hand carved Coral stones.**



Two Greathandcarved goddesses Psyche (Soul) and Ceres (Fertility), circa 1900 - 1910 White Coral Stones. Measurements is 14mm. by 19mm. . Total weight is 3.48grams. The Perfect Antique condition from La Clerk Collection, Paris, France.

PRICE - \$USD 89.00



**18x13(mm.) Two images of Good hand carved profiles  
From the 1920-1940 White/Rose Coral stones.**



Two high relief well hand carved Rose/White Coral stone Post Edwardian images of (1920 - 1940) . Measurements is 18 mm. by 13mm. . Weight is 2.38grams. The Perfect Antique condition from La Clerk Collection.

PRICE - \$USD 89.00



**20x15 (mm.) Beauties from 1915-1935  
Hand carved Rose/White Coral stones.**



Two hand carved Rose/White Coral Beauties from the 1915 - 1935 or older. Measurements is 20 mm. by 15 mm. . Weight is 4.17 grams. The Antique condition from La Clerk Collection.

PRICE - \$USD 99.00



**20x15(mm.) Two of ancient Roman women  
Hand carved Coral stones circa 1900-1910.**



Two high relief well hand carved Rose/White Coral Stone images of (1900 - 1910) Goddess. Measurements is 20 mm. by 15 mm. . Weight is 4.12 grams. The Antique condition from La Clerk Collection.

PRICE - \$USD 99.00



**18x9(mm.) Two of ancient Roman women  
Hand carved Coral stones circa 1900-1910.**



Two high relief well hand carved Rose/White Coral Stone images of (1900 - 1910) Goddess. Measurements is 18 mm. by 9 mm. . Weight is 2 grams. The Antique condition from La Clerk Collection.

PRICE - \$USD 69.00



**14x7(mm.) Ancient women 1900-1910  
Two hand carved Coral stones circa.**



Two high relief well hand carved Rose/White Coral Stone images of (1900 - 1910) Goddess. Measurements is 18 mm. by 9 mm. . Weight is 2 grams. The Antique condition from La Clerk Collection.

PRICE - \$USD 59.00





**24x12(mm.) Great Roman man & women  
2 hand carved Coral stones circa 1890.**

Two high relief Museum Quality hand carved and signed Rose/White Coral Stone images of Classic Roman profiles (1900 - 1910) Woman and Man. Measurements is 24 mm. by 12 mm. . The total weight is 4 grams. The Antique condition from La Clerk Collection.

PRICE - \$USD 129.00



**20x15(mm.) 2 goddesses Selena & Psyche  
Hand carved Coral stones circa 1900-1910.**

Two high relief well hand carved Rose/White Coral Stone images of (1900 - 1910) Psyche & Selena Goddesses. Measurements is 20 mm. by 15 mm. . Weight is 4 grams. The Antique condition from La Clerk Collection.

PRICE - \$USD 99.00



**15x7 (mm.) Circa 1910 Classic Edwardian Profile  
Tiny hand carved Angel Skin stone.**

Stylishly hand carved and signed by the Artist Angel Skin(?) or White Coral Edwardian Stone circa 1910. Measurements is 15 mm. by 7 mm. . Weight is 0.44 grams. The Perfect Antique condition from La Clerk Collection, France.

PRICE - \$USD 35.00



**15 (mm) diameter (2) & 18x13(mm.) (1)  
3 Hand carved Coral stones images of bouquets of Flowers.**

Two hand carved circles(15mm.) and one oval 18x13(mm.)Coral Stones-images of bouquetsof flowers. Weight is 2.62 grams. from La Clerk Collection.

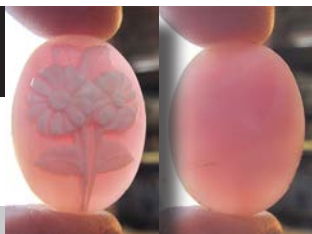
PRICE - \$USD 49.00



**25x19 (mm.) Circa 1930 Bouquet of Flower  
Hand carved Angel Skin or Coral stone.**

Hand carved Angel Skin(?) or White/Rose Coral Edwardian Stone circa 1930-1940. Measurements is 25 mm. by 19 mm. . Weight is 2.3 grams. The Perfect vintage condition from La Clerk Collection, France.

PRICE - \$USD 35.00



**19x10(mm.) Great Art Deco Women profiles  
2 hand carved Coral stones circa 1915.**

Two high Quality hand carved and White Coral Stones images of Art Deco profiles (1910 - 1920) Edwardian Women. Measurements is 19 mm. by 10 mm. . The total weight is 2.29 grams. The Antique condition from La Clerk Collection.

PRICE - \$USD 99.00







**16x7(mm.) Psyche & Hebe Two Goddess  
Circa 1905 hand carved Angel Skin Figures.**

Two high Quality intricately hand carved Angel Skin/ White Coral Stones tiny images of Psyche and Hebe Goddess figures circa 1890 - 1910. Measurements is 16 mm. by 7 mm. . The total weight is 1.4 grams. The Antique condition from La Clerk Collection.

PRICE - \$USD 99.00



**18x10(mm.) Museum Art Deco signed profiles  
Hand carved Coral stones/shell circa 1915.**

Two high Museum Quality hand carved and signed by the Artist Coral/Sardonyx images of Art Deco profiles (1910 - 1920) Edwardian ladies. Measurements is 18 mm. by 10 mm. . The total weight is 1.6 grams. The Antique condition from La Clerk Collection.

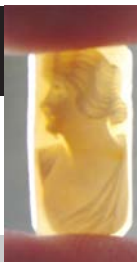
PRICE - \$USD 129.00



**18x9(mm.) Great Art Deco signed profiles  
Hand carved Coral/Shell circa 1925.**

Two high Quality hand carved Coral(?) /Sardonyx images of Art Deco profiles (1915 - 1930) Post-Edwardian ladies. Measurements is 18 mm. by 9 mm. . The total weight is 1.94 grams. The Antique condition from La Clerk Collection.

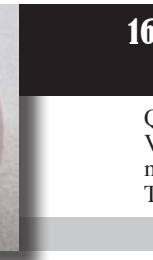
PRICE - \$USD 99.00



**17x12(mm.) Two of Roman Goddess Psyche  
Hand carved Coral stones circa 1900-1910.**

Two Great hand carved and signed goddess Psyche (Soul) , circa 1900 - 1910 Rose/White Coral Stones. Measurements is 17mm. by 12mm. . Total weight is 2.94 grams. The Perfect Antique condition from La Clerk Collection, Paris, France.

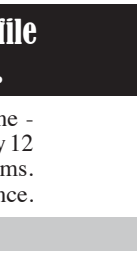
PRICE - \$USD 99.00



**16x12 (mm.) Circa 1890-1910 Classic Venus Profile  
Victorian hand carved & signed Coral stone.**

Quality detailing small high relief Rose/White Coral Stone - Venus Goddess of Love. Circa 1890 - 1910 petite (16 mm. by 12 mm.) Hand and signed carved Victorian. Weight is 1.25 grams. The Perfect Antique condition from La Clerk Collection, France.

PRICE - \$USD 49.00



**17x12(mm.) 2 of Goddesses Psyche & Flora  
Hand carved Coral stones circa 1900-1910.**

Two Great hand carved and signed goddess Psyche (Soul)-signed and Flora, circa 1900 - 1910 Rose/White Coral Stones. Measurements is 17mm. by 12mm. . Total weight is 2.99 grams. The Perfect Antique condition from La Clerk Collection, Paris, France.

PRICE - \$USD 95.00





**18x13(mm.) Modern well carved 1970th Beauty  
Hand carved Angel Skin Rose stone**

Well carved pretty girl profile - unmounted modern/vintage circa 1970-1995. Rose Angel Skin. Total measurements - 18 x 13 (mm). Total weight - 1.52 grams. From Rome Italy.

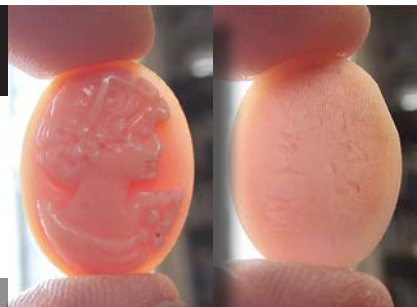
PRICE - \$USD 49.00



**20x15(mm.) Signed M+M SCOGNAMIGLIO  
Hand carved Angel Skin Rose stone**

Greatly carved pretty girl profile - unmounted modern/vintage signed M+M from famous Italian Scagnamiglio collection, circa 1970-1995. signed by the Artist Rose Angel Skin. Total mea- 12 x 16 (mm). Total weight - 2 grams. From Rome Italy.

PRICE - \$USD 59.00



**23x18(mm.) Museum Victorian Ceres Goddess  
Hand carved Angel Skin Rose stone.**



Greatly carved Ceres Motherhood Goddess profile. Unmounted Angel Skin Stone, Antique from 1880th. Total measurements - 23 x 18 (mm). Total weight - 2.97 grams. The good Antique condition from famous La Clerk Collection, France.

PRICE - \$USD 99.00



**26x16(mm.) Young Beauty from the 1930th  
Museum Quality carved Angel Skin stone.**

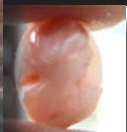


Greatly carved Ceres Motherhood Goddess profile. Unmounted, circa 1930, high relief Angel Skin. Total measurements - 23 x 18 x 8 (mm). Total weight - 4.92 grams. The Perfect Antique condition from famous La Clerk Collection, France.

PRICE - \$USD 149.00

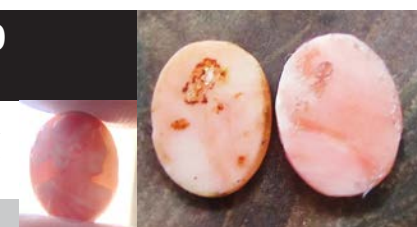


**12x9 (mm.) Ancient Roman Beauties from 1890-1910  
Tiny hand carved Red Salmon Coral stones.**



Two hand carved Red Salmon Coral Ancient Roman Beauties from the 1890 - 1910 or older. Measurements is 12 mm. by 9 mm. Weight is 1.51 grams. The Antique condition from La Clerk Collection.

PRICE - \$USD 99.00



**9x7 (mm.) Amazingly small & well Psyche Goddess image  
Museum Quality hand carved Red Salmon Coral stone.**

Two hand carved Red Salmon Coral Ancient Roman Beauties from the 1890 - 1910 or older. Measurements is 12 mm. by 9 mm. Weight is 1.51 grams. The Antique condition from La Clerk Collection.

PRICE - \$USD 79.00







**10x6 (mm.) Amazingly small woman's face  
The good Quality hand carved Red Coral stone.**

Handcarved Red Coral Ancient Roman Beauties from the 1890-1910 or older. Measurements is 10 mm. by 6 mm. . Weight is 0.23 grams. The Antique condition from La Clerk Collection.

PRICE - \$USD 49.00



**15x12 (mm.) Ancient Roman Beauties circa 1880  
Museum hand carved Red Salmon Coral stones.**

Two hand carved Red Salmon Coral Ancient Roman Beauties circa 1880 Measurements is 15 mm. by 12 mm. . Weight is 1.51 grams. The Antique condition from La Clerk Collection.

PRICE - \$USD 129.00



**14x10 (mm.) Roman/Greek style Beauties circa 1890  
High relief hand carved Red Salmon Coral stones.**

Two high relief hand carved Red Salmon Coral Ancient Roman/Greek Beauties circa 1880-1900. Measurements is 14 mm. by 10 mm. . Weight is 2.54 grams. The Antique condition from La Clerk Collection.

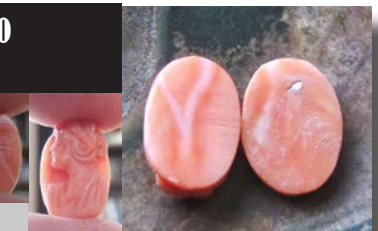
PRICE - \$USD 99.00



**14x10 (mm.) Roman/Greek style Beauties circa 1890-1910  
High relief hand carved Red Salmon Coral stones.**

Two high relief hand carved Red Salmon Coral Ancient Roman/Greek Beauties circa 1890-1910. Measurements is 14 mm. by 10 mm. . Weight is 2.1 grams. The Antique condition from La Clerk Collection.

PRICE - \$USD 99.00



**8x4 (mm.) Amazingly small man's and woman's heads  
The Quality micro hand carved Red Coral stone.**

Amazingly small hand carved Red Coral male and female heads from the end of XIX century. Measurements is 8 mm. by 4 mm. . Total Weight is 0.29 grams. The Antique condition from La Clerk Collection.

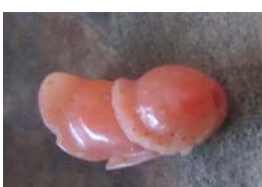
PRICE - \$USD 79.00



**14x10 (mm.) Roman/Greek style Beauties circa 1890  
Well hand carved Red Salmon Coral stones.**

Two hand carved Red Salmon Coral Ancient Roman Beauties circa 1880-1900. Measurements is 14 mm. by 10 mm. . Weight is 1.16 grams. The Antique condition from La Clerk Collection.

PRICE - \$USD 89.00



**16x5 (mm.) XVIII century Male sexual object (dick)  
High relief hand carved Red Salmon Coral stones.**

Greatly hand carved 3 dimensional Red Salmon Coral Ancient Japan circa 1770. Measurements is 6 mm. by 10 mm. . Weight is 2.54 grams. From La Clerk Collection.

PRICE - \$USD 77.00





**20x14 (mm.) Roman/Greek Goddesses Psyche & Ceres circa 1890-1910**  
**High relief hand carved Red Coral stones.**



Two high relief hand carved Red Coral Roman/Greek Beauties circa 1890-1910. Measurements is 20 mm. by 14 mm. . Weight is 6.68 grams. The Antique condition from La Clerk Collection.



PRICE - \$USD 199.00



**14x10 (mm.) Museum Quality Beauties circa 1890-1915**  
**High relief hand carved Red Salmon Coral stones.**

Two high relief hand carved Red Salmon Coral Roman/Greek Beauties circa 1890-1915. Measurements is 14 mm. by 10 mm. . Total Weight is 1.94 grams. The Antique condition from La Clerk Collection.



PRICE - \$USD 129.00



**12x8 (mm.) Quality Victorian Psyche Goddess circa 1890-1910**  
**High relief 2 hand carved tiny Red Salmon Coral stones.**

Two hand carved Red Salmon Coral Roman Goddess of Soul Psyche from 1890-1910. Measurements is 12 mm. by 8 mm. . Total Weight is 1.2 grams. The perfect Antique condition from La Clerk Collection.



PRICE - \$USD 99.00



**15x6 (mm.) 2 Roman Goddess Psyche circa 1910**  
**Museum hand carved Red Salmon Coral stones.**

Two greatly hand carved Red Salmon Coral stones. Ancient Roman Goddess of Soul Psyche circa 1880 Measurements is 15 mm. by 6 mm. . Weight is 1.2 grams. The good Antique condition from La Clerk Collection.

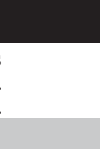


PRICE - \$USD 99.00



**13x6 (mm.) Roman Goddess & 2 decor pieces circa 1910**  
**Detailedly hand carved tiny Red Salmon Coral stones.**

Greatly hand carved Red Salmon Coral stones. Ancient Roman Goddess + two elements of decor circa 1880 Measurements is 13 mm. by 6 mm. . Weight is 1.2 grams. The Antique condition from La Clerk Collection.

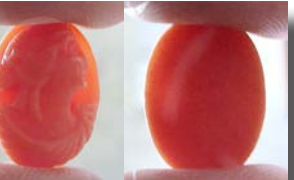


PRICE - \$USD 49.00



**16x12 (mm.) Psyche - Goddess of Soul & Sensitivity**  
**The Quality hand carved Red Salmon Coral stone.**

Hand carved Salmon Coral Goddess of Soul Psyche. Measurements is 16 mm. by 12 mm. . Total Weight is 1.42 grams. The Antique condition from La Clerk Collection.

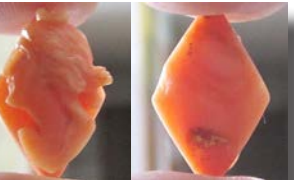
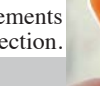


PRICE - \$USD 55.00



**18x12 (mm.) The Great Diana - Goddess of Purity and Hunting**  
**The Diamond shape hand carved Red Salmon Coral stone.**

Hand carved diamond shape Salmon Coral Goddess of Purity Diana. Measurements is 18 mm. by 12 mm. . Weight is 1.2 grams. Circa 1910, from La Clerk Collection.



PRICE - \$USD 77.00

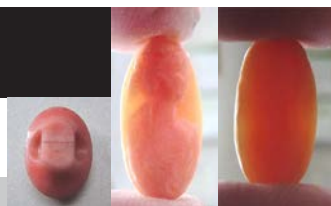




**17x9 & 11x16(mm.) Two profiles-(one button) circa 1910  
Well hand carved Red Coral stones.**

Two greatly hand carved Red Salmon Cora stones. Ancient Roman Goddess of Soul Psyche circa 1880 Measurements is 17 mm. by 9 mm & button 11x6(mm.).  
. Weight is 2.48 grams. The good Antique condition from La Clerk Collection.

PRICE - \$USD 59.00



**20x10 (mm.) Couple Psyche - Goddess of Soul & Sensitivity  
Hand carved Rose/White Coral stones 1890-1910.**

Two hand carved Rose/White Coral Victorian Stones - Psyche Goddess from 1890 - 1910. Measurements are 10 mm. by 20 mm. . Weight is 3.6 grams. The Perfect Antique condition from La Clerk Collection.

PRICE - \$USD 99.00



**20x10 (mm.) Couple Ceres - Goddess of Fertility & Motherhood  
Hand carved Rose/White Coral stones 1890-1910.**

Two hand carved Rose/White Coral Victorian Stones - Ceres Goddess Fertility & Motherhood from 1890 - 1910. Measurements are 10 mm. by 20 mm. . Weight is 2.92 grams. The Perfect Antique condition from La Clerk Collection.

PRICE - \$USD 99.00



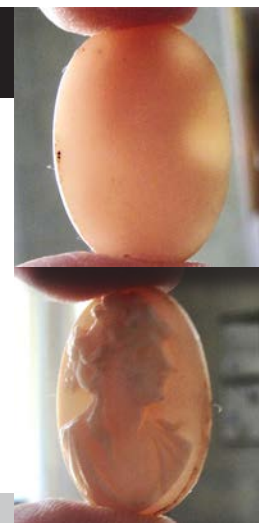
**24x18(mm.) Hand carved light Coral stone Psyche - soul Goddess  
Museum Quality from UK Antique collection. Circa 1890-1910.**



Museum Quality Edwardian carving from 1890-1910 hand carved Light Coral stone image of Psyche - Goddess of Soul, Sex & Sensitivity. Weight - is 2.84 grams. Measurements - 24 mm. tall and 18 mm. wide. The Perfect Antique conditions.



PRICE - \$USD 129.00



**20x15 (mm.) Edwardian 1910-1915 Psyche Goddess  
Greatly hand carved Rose/White Coral stones.**

Superior hand carved Rose/White Coral Edwardian Stone - Psyche Goddess from 1910 - 1915. Measurements is 20 mm. by 15 mm. . Weight is 1.55 grams. The Perfect Antique condition from La Clerk Collection.

PRICE - \$USD 79.00





**24x18(mm.) Hand carved light Coral stone Bacchante - priest of Bacchus**  
**Quality from UK Antique collection. Circa 1880-1900.**



Quality Victorian carving circa 1880 hand carved Light Coral stone image of Bacchante - Priestess of Bacchus. Weight - is 3.56 grams. Measurements - 24 mm. tall and 18 mm. wide. The Perfect Antique conditions.

PRICE - \$USD 129.00



**24x18(mm.) Hand carved light Coral Psyche - Goddess of Soul**  
**Quality Victorian from UK Antique collection. Circa 1890-1910.**



Quality Victorian/Edwardian cameo from 1890 - 1910 hand carved Light Coral stone image of Psyche - Goddess of Soul. Weight - is 3.92 grams. Measurements - 24 mm. tall and 18 mm. wide. The Perfect Antique conditions from Suffolk UK Collection.



PRICE - \$USD 89.00



**20x15(mm.) Signed M+M SCOGNAMIGLIO**  
**Hand carved Coral Rose profile stone.**



Greatly carved pretty girl profile - unmounted modern/vintage signed M+M from famous Italian Scognamiglio collection, circa 1970-1995. signed by the Artist Rose Coral stone. Total measurements - 12 x 16 (mm). Total weight - 2 grams. From Rome Italy.

PRICE - \$USD 39.00



**20x15(mm.) Victorian profile of Goddess Flora circa 1890**  
**Hand Carved & Signed Rose/White Coral stone.**



Greatly carved & signed profile - Antique circa 1890. Coral stone. Total measurements 20 x 15 (mm). Total weight - 2.24 grams. The Perfect Antique condition from La Clerk Collection.

PRICE - \$USD 49.00

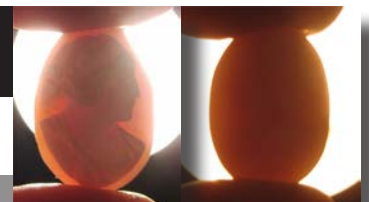


**20x15(mm.) Victorian Classic Roman profile circa 1890**  
**Hand Carved & Signed Rose/White Coral stone.**



Greatly carved - Antique woman's profile circa 1890. Coral stone. Total measurements 20 x 15 (mm). Total weight - 2.24 grams. The Perfect Antique condition from La Clerk Collection.

PRICE - \$USD 59.00







**25x16 (mm.) Circa 1890-1910 Psyche Classic Profile  
Victorian hand carved White Coral stone.**

Greatly hand Psyche Goddess carved White Coral Victorian Stone - 1890 - 1910. Measurements is 25 mm. by 16 mm. . Weight is 2.87 grams. The Good Antique condition from La Clerk Collection, France.

PRICE - \$USD 75.00



**20x15(mm.) Two Classic Bacchantes  
Hand carved Coral stones circa 1910.**

Two high relief Rose/White Coral Stone images from 1900 - 1910, well hand carved and signed. Measurements is 20 mm. by 15 mm. . Weight is 4.42 grams. The Perfect Antique condition from La Clerk Collection.

PRICE - \$USD 99.00



**20x15(mm.) Circa 1890 Classic Odyssey & Penelopa.  
Hand carved and signed Coral stones**

Two Rose/White Coral Stone images from 1880 - 1910, hand carved and signed. Measurements is 20 mm. by 15 mm. . Weight is 4.37 grams. The Perfect Antique condition from La Clerk Collection.

PRICE - \$USD 95.00

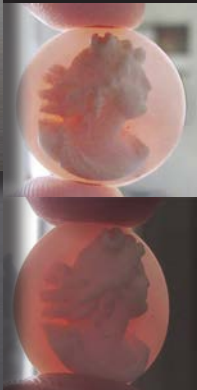


**18(mm.) Diameter Hand carved light Coral stone Diana Goddess  
Museum Quality from UK Antique collection. Circa 1895-1910.**



Museum Quality carving light Coral stone. Roman Diana Goddess. Weight - 2 grams. Measurements - 18 mm. Diameter. The Perfect Antique conditions.

PRICE - \$USD 159.00



**25x19 (mm.) Circa 1880 Classic Diana Profile  
High relief hand carved & signed Coral stone.**

Greatly hand carved high relief White Coral Victorian Stone - Diana Goddess from 1870 - 1890. Measurements is 25 mm. by 19 mm. . Weight is 4.41 grams. The Perfect Antique condition from La Clerk Collection, France.

PRICE - \$USD 125.00





**20x16 (mm.) Edwardian 1915-1925 Stylish profile  
Greatly hand carved Art Deco White Coral stone.**

Superior hand carved White/Rose Coral Edwardian Stone - pretty girl from 1915 - 1925. Measurements is 20 mm. by 15 mm. . Weight is 2.26 grams. The Perfect Antique condition from La Clerk Collection.

PRICE - \$USD 59.00



**20x15 (mm.) 1935-1955 Pretty Girlish profile  
Well hand carved Rose/White Coral stone.**

Superior hand carved White/Rose Coral Edwardian Stone - pretty girl from 1935 - 1955. Measurements is 20 mm. by 15 mm. . Weight is 2.26 grams. The Perfect Antique condition from La Clerk Collection.

PRICE - \$USD 59.00



**24x18 (mm.) Victorian Pretty Girlish profile  
Museum quality carved/signed Coral stone.**



Superior hand carved and signed by the Artist White/Rose Coral Victorian Stone - pretty girl from 1880th. Measurements is 24 mm. by 18 mm. . Weight is 2.77 grams. The Perfect Antique condition from La Clerk Collection.

PRICE - \$USD 99.00

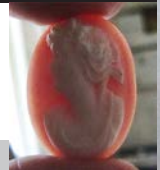


**25x18(mm.) Two Classic Ancient Roman (Ceres?) profiles  
Hand carved high relief Coral stones circa 1890-1910.**



Two high relief Rose/White Coral Stone images from 1890 - 1910, well hand carved and signed. Measurements is 20 mm. by 15 mm. . Weight is 4.42 grams. The Perfect Antique condition from La Clerk Collection.

PRICE - \$USD 149.00



**24x18 (mm.) Circa 1880 Classic Roman Female Profile  
High relief hand carved & signed Coral stone.**



Greatly hand carved high relief White/Rose Coral Victorian Stone - Classic Roman profile from 1870 - 1890. Measurements is 24 mm. by 18 mm. . Weight is 3.84 grams. The Perfect Antique condition from La Clerk Collection, France.

PRICE - \$USD 125.00







**24x18 (mm.) Edwardian circa 1915 profile  
Carved/Signed High relief Coral stone.**

Superior hand carved and signed by the Artist White/Rose Coral Victorian Stone - pretty girl from 1880th. Measurements is 24 mm. by 18 mm. . Weight is 2.77 grams. The Perfect Antique condition from La Clerk Collection.

PRICE - \$USD 79.00



**25x18 (mm.) Victorian circa 1890 profile  
Carved High relief Coral stone.**

Well hand carved art Nouveau White/Rose Coral Victorian Stone - pretty girl from 1880-1900. Measurements is 25 mm. by 18 mm. . Weight is 3.45 grams. The Perfect Antique condition from La Clerk Collection.

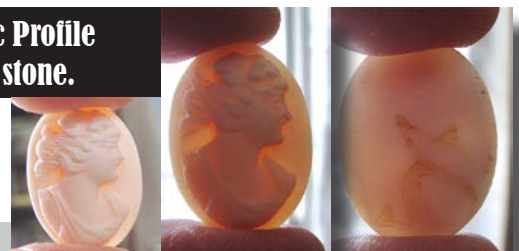
PRICE - \$USD 55.00



**20x14 (mm.) Circa 1890-1915 Psyche Classic Profile  
Museum quality hand carved White Coral stone.**

Greatly hand Psyche Goddess carved White/Rose Coral Victorian Stone - 1890 - 1910. Measurements is 20 mm. by 14 mm. . Weight is 1.58 grams. The Good Antique condition from La Clerk Collection, France.

PRICE - \$USD 75.00



**24x17 (mm.) Circa 1910-1925 Great Girlish Profile  
Quality hand carved White Coral stone.**

Greatly hand carved young girl profile White/Rose Coral Edwardian Stone circa 1920 (Readjusted by the modern Artist). Measurements is 24 mm. by 17 mm. . Weight is 2.66 grams. The Good Antique condition from La Clerk Collection, France.

PRICE - \$USD 65.00



**18x12(mm.) Two Goddess - Psyche & Ceres  
Hand carved Coral stones circa 1900-1910.**

2 hand carved and signed goddess Psyche & Ceres, circa 1900 Coral Stones. Measurements is 18mm. by 12mm. . Weight is 2.36 grams. From La Clerk Collection, France.

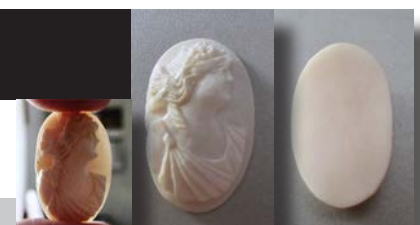
PRICE - \$USD 99.00



**24x15 (mm.) Circa 1890-1910 Classic Profile  
Victorian hand carved White Coral stone.**

Greatly hand carved White Coral Victorian Stone - 1890 - 1910. Measurements is 24 mm. by 15 mm. . Weight is 2.6 grams. The Perfect Antique condition from La Clerk Collection, France.

PRICE - \$USD 75.00



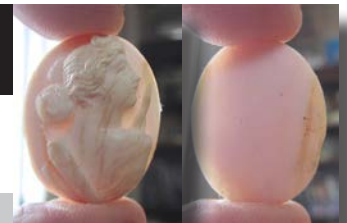


**25x20 (mm.) Circa 1890-1910 Diana Goddess of Hunting  
Victorian hand carved White Coral stone.**



Greatly hand carved White Coral Victorian Stone - 1890 - 1910. Measurements is 25 mm. by 20 mm. . Weight is 4.41 grams. The Reasonable Antique condition from La Clerk Collection, France.

PRICE - \$USD 69.00



**22x17 (mm.) Circa 1890-1910 Diana Goddess of Hunting  
Victorian Museum quality hand carved White Coral stone.**



Greatly Museum hand carved White /Rose Coral Victorian Stone - 1890 - 1910. Measurements is 22mm. by 17mm. . Weight is 3.1 grams. The Perfect Antique condition from La Clerk Collection, France.

PRICE - \$USD 99.00



**25x18(mm.) Museum Quality Psyche & Ceres  
Hand carved & signed Coral circa 1890.**



2 hand carved and signed goddess Psyche & Ceres, circa 1900 Coral Stones. Measurements is 25mm. by 18mm. . Weight is 6.21 grams. From La Clerk Collection, France.

PRICE - \$USD 199.00



**25x19(mm.) Light Coral stone Diana Goddess of Purity & Hunting  
Museum Quality hand carved & signed. Circa 1880-1900.**



Quality Victorian carving circa 1890 hand carved Coral stone Diana Goddess of Purity. Weight - is 4.31 grams. Measurements - 25 mm. tall and 19 mm. wide. The Perfect Antique conditions.

PRICE - \$USD 139.00



**25x18(mm.) Profile of Goddess Demetra circa 1890  
Hand Carved & Signed Rose/White Coral stone.**

Greatly carved & signed profile - Antique circa 1890 high relief Rose/White Coral stone. Total measurements 25 x 18 x 6 (mm). Total weight - 3.61 grams. The Perfect Antique condition from La Clerk Collection.

PRICE - \$USD 89.00

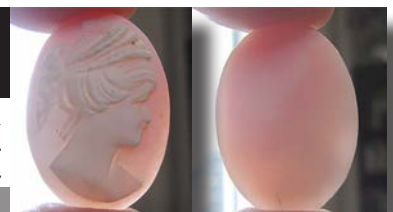


**25x18(mm.) Profile of Goddess Demetra circa 1910  
Hand Carved Rose/White Coral stone.**



Greatly carved profile - Antique circa 1910 Rose/White Coral stone. Total measurements 25 x 18 (mm). Total weight - 2.63 grams. The Perfect Antique condition from La Clerk Collection.

PRICE - \$USD 79.00







**25x19(mm.) Hand carved & signed Coral stone Soul Goddess Psyche  
Museum Quality from UK Antique collection. Circa 1895-1910.**



Museum Quality carved/ signed Coral stone. Roman Goddess Psyche. Weight -3.8 grams. Measurements - 19mm. by 25mm. Circa 1890 Perfect Antique conditions.

PRICE - \$USD 149.00



**24x18(mm.) Hand carved & signed Coral/Angel Skin Seres Goddess  
Museum Quality from UK Antique collection. Circa 1895-1910.**



Museum Quality carved High Relief Angel Skin/Coral Roman Goddess Psyche. Weight - 4 grams. Measurements - 18mm. by 24mm. Circa 1890-1910. Perfect Antique conditions.

PRICE - \$USD 179.00



**25x18(mm.) Museum Quality Psyche & Flora  
Hand carved & signed Coral circa 1890.**



2 hand carved and signed goddess Psyche & Flora, circa 1890 Coral Stones. Measurements is 25mm. by 18mm. . Weight is 7.37 grams. From La Clerk Collection, France.

PRICE - \$USD 199.00



**24x18(mm.) Classic Roman Goddess of Motherhood Ceres  
Hand carved & signed Coral stone circa 1910.**



Two high relief Rose/White Coral Stone images from 1890 - 1910, well hand carved and signed by the Artist. Measurements is 24 mm. by 18 mm. . Weight is 7.42 grams. The Perfect Antique condition from La Clerk Collection.

PRICE - \$USD 89.00

130

**25x17(mm.) Classic Ancient Rome woman circa 1880  
Hand Carved & Signed White Coral stone.**

Greatly carved and signed by the Artist Classic Antique profile - Ancient Roman woman circa 1880 lite Coral/Angel Skin(?) stone. Total measurements 25 x 17 (mm). Total weight - 2 grams. The Perfect Antique condition from La Clerk Collection.

PRICE - \$USD 69.00

131

**24x17 (mm.) Circa 1915-1925 Psyche Goddess Profile  
Quality hand carved White/Rose Coral stone.**

Handcarved Art Deco White/Rose Coral Stone - profile Goddess of Soul Psyche, circa 1920. Measurements is 24 mm. by 17 mm. . Weight is 2.7 grams. The Good Antique condition from La Clerk Collection, France.

PRICE - \$USD 65.00

132

**29x22 (mm.) Circa 1915-1935 Psyche Goddess  
Quality hand carved White/Rose Coral stone.**

Hand carved Art Deco White/Rose Coral Stone - profile Goddess of Soul Psyche, circa 1920. Measurements is 29 mm. by 22 mm. . Weight is 5.14 grams. The Perfect Antique/Vintage condition from La Clerk Collection, France.

PRICE - \$USD 95.00

133

**29x22 (mm.) Circa 1895-1915 Bacchante priestess  
Quality hand carved White/Rose Coral stone.**

Hand carved Victorian White/Rose Coral Stone - Bacchante priestess, circa 1905. Measurements is 29 mm. by 22 mm. . Weight is 5.45 grams. The Good Antique condition from La Clerk Collection, France.

PRICE - \$USD 95.00

134

**30x23 (mm.) 1895-1915 Ancient Roman profile  
Quality hand carved White/Rose Coral stone.**

Hand carved Victorian White/Rose Coral Stone - Aliza, Ancient Roman profile, circa 1905. Measurements is 30 mm. by 23 mm. . Weight is 5.29 grams. The Good Antique condition from La Clerk Collection, France.

PRICE - \$USD 89 .00

135

**30x23 (mm.) 1895-1915 Ancient Roman profile  
Hand carved & signed White/Rose Coral.**

Hand carved Victorian White/Rose Coral Stone - Ancient Roman profile, circa 1905. Measurements is 30 mm. by 23 mm. . Weight is 4.72 grams. The Good Antique condition from La Clerk Collection, France.

PRICE - \$USD 89.00



136



**28x22 (mm.) Circa 1880-1910 Diana Goddess of Hunting  
Victorian hand carved White Coral stone.**

Greatly hand carved Rose/White Coral Victorian Stone from 1880 - 1910. Measurements is 28 mm. by 22 mm. . Weight is 5.75 grams. The Perfect Antique condition from La Clerk Collection, France.

PRICE - \$USD 89.00

137



**29x22(mm.) Motherhood Goddess Ceres hand carved Coral stone  
Museum Quality from UK Antique collection. Circa 1895-1910.**

Quality hand carved Coral stone. Roman Goddess Ceres. Weight - 6.35 grams. Measurements - 29mm. by 22mm. Circa 1895-1910 Fare Antique conditions.

PRICE - \$USD 99.00

138



**29x21(mm.) Hunting & Purity Goddess Diana hand carved Coral stone  
Museum Quality from UK Antique collection. Circa 1895-1910.**

Museum Quality hand carved Coral stone. Roman Goddess Diana. Weight - 4.45 grams. Measurements - 29mm. by 21mm. Circa 1895-1910. The Perfect Antique conditions.

PRICE - \$USD 199.00

139



**25x20 (mm.) Circa 1910-1930 Psyche Goddess  
Quality hand carved White Coral stone.**

Hand carved White Coral Stone - profile Goddess of Soul Psyche, circa 1915. Measurements is 25 mm. by 20 mm. . Weight is 3.27 grams. The Perfect Antique condition from La Clerk Collection, France.

PRICE - \$USD 75.00

140



**30x23 (mm.) Circa 1910-1930 Bacchante priestess  
Quality hand carved White Coral stone.**

Hand carved White Coral Stone - Bacchante profile circa 1910-1930. Measurements is 30 mm. by 23 mm. . Weight is 4.54 grams. The good Antique condition from La Clerk Collection, France.

PRICE - \$USD 95.00



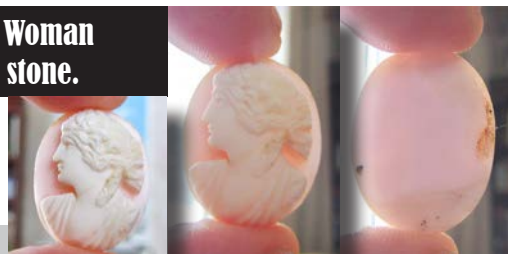
141



**25x19 (mm.) Circa 1880 Ancient Roman Woman  
Great Quality hand carved White Coral stone.**

Greatly hand carved high relief White Coral Stone - Ancient Roman profile circa 1880. Measurements is 25 mm. by 19 mm. . Weight is 4.29 grams. The good Antique condition from La Clerk Collection, France.

PRICE - \$USD 115.00



142



**32x25(mm.)Rose/White Coral Diana Goddess of Purity & Hunting  
Museum Quality hand carved circa 1880-1900 Victorian.**

Quality Victorian carving circa 1890 hand carved Coral stone Diana Goddess of Purity. Weight is 5.25 grams. Measurements - 25 mm. by 32 mm. . The Perfect Antique conditions.

PRICE - \$USD 149.00



143



**29x21 (mm.) Circa 1910-1930 Goddess Ceres  
Quality hand carved White Coral stone.**

Hand carved White Coral Stone - Ceres Goddess of Motherhood and Fertility profile circa 1910 -1930. Measurements is 29 mm. by 21 mm. . Weight is 5.66 grams. The perfect Antique condition from La Clerk Collection, France.

PRICE - \$USD 95.00



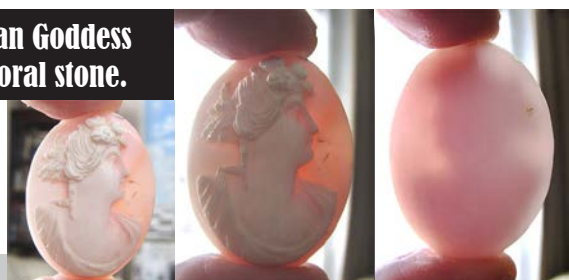
144



**35x26 (mm.) Circa 1880-1910 Roman Goddess  
Quality hand carved White/Rose Coral stone.**

Hand carved White Coral/Angel Skin Classic - Roman Goddess or Bacchante profile circa 1880 -1910. Measurements is 35 mm. by 26 mm. . Weight is 6.5 grams. The perfect Antique condition from La Clerk Collection, France.

PRICE - \$USD 129.00





145



**30x24 (mm.) 1910th Classic Edwardian Beauty  
Quality hand carved light Coral stone.**

Museum hand carved White Coral/Angel Skin Classic Roman Beauty Edwardian profile from the 1910th. Measurements is 30 mm. by 24 mm. . Weight is 3.86 grams. The perfect Antique condition from La Clerk Collection, France.

PRICE - \$USD 149.00



146



**30x24 (mm.) 1890th Classic Victorian Beauty  
Museum Quality hand carved Coral stone.**

Museum Quality hand carved White/Rose Coral Classic Roman Victorian Beauty profile from the 1890th. Measurements is 30 mm. by 24 mm. . Weight is 5.13 grams. The perfect Antique condition from La Clerk Collection, France.

PRICE - \$USD 179.00



147



**30x23 (mm.) 1910th Classic Edwardian Beauty  
Museum Quality hand carved Coral stone.**

Museum Quality hand carved White/Rose Coral Classic Edwardian Beauty profile from the 1890th. Measurements is 30 mm. by 23mm. Weight is 3.33 grams. The perfect Antique condition from La Clerk Collection, France.

PRICE - \$USD 179.00



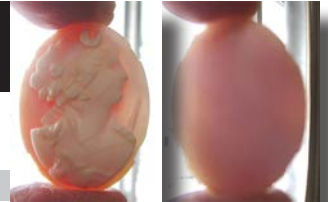
148



**29x23 (mm.) 1880-1900 Diana Goddess of Purity & Hunting  
Victorian hand carved & signed White/Rose Coral stone.**

Greatly hand carved White Coral Victorian Stone - 1880 - 1900. Measurements is 29 mm. by 23 mm. . Weight is 5.78 grams. The Reasonable Antique condition from La Clerk Collection, France.

PRICE - \$USD 89.00



149



**29x22 (mm.) Circa 1890-1910 Ancient Roman Woman  
Great Quality hand carved & signed Coral stone.**

Greatly hand carved high relief White Coral Stone - Ancient Roman profile circa 1890-1910. Measurements is 29 mm. by 22 mm. . Weight is 5.25 grams. The good Antique condition from La Clerk Collection, France.

PRICE - \$USD 89.00



150



**29x20 (mm.) Circa 1890 Psyche Goddess of Soul  
Quality hand carved Victorian Coral stone.**

Hand carved & signed Coral Stone - profile Goddess of Soul Psyche, circa 1890. Measurements is 29 mm. by 20 mm. . Weight is 4.01 grams. The Perfect Antique condition from La Clerk Collection, France.

PRICE - \$USD 99.00





151



**25x18(mm.) Couple Museum Quality profiles  
Hand carved & signed Coral circa 1890.**

2 hand carved and signed Museum Quality circa 1890 Coral Stones. Measurements is 25mm. by 18mm. . Weight is 7.7 grams. From La Clerk Collection, France.

PRICE - \$USD 199.00



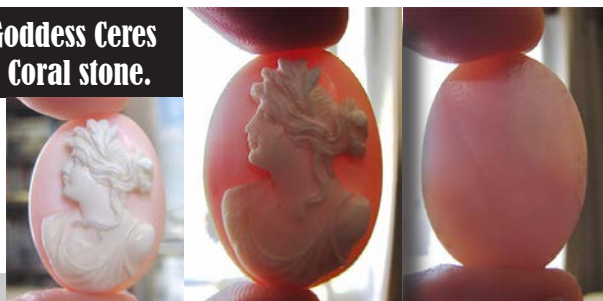
152



**30x21 (mm.) Circa 1890 Roman Goddess Ceres  
Quality hand carved White/Rose Coral stone.**

Hand carved and signed Museum White/Rose Coral Classic - Roman Goddess of Fertility profile circa 1880 -1910. Measurements is 30 mm. by 21 mm. . Weight is 5.46 grams. The perfect Antique condition from La Clerk Collection, France.

PRICE - \$USD 149.00



153



**29x22 (mm.) Circa 1915 Roman Goddess Psyche  
Quality hand carved White Coral stone.**

Hand carved and signed Museum White Coral Classic - Roman Goddess of Soul & Sensitivity profile, circa 1910 - 1920. Measurements is 29 mm. by 22 mm. . Weight is 5.46 grams. The perfect Antique condition from La Clerk Collection, France.

PRICE - \$USD 129.00



154



**28x20(mm. Angel Skin/White Coral Flora Goddess  
Museum Quality hand carved circa 1910 Edwardian.**



Quality Edwardian carving circa 1910 hand carved Coral stone Flora Goddess of Flowers. Weight is 2.99 grams. Measurements - 28mm. by 20 mm. . The Perfect Antique conditions.

PRICE - \$USD 149.00



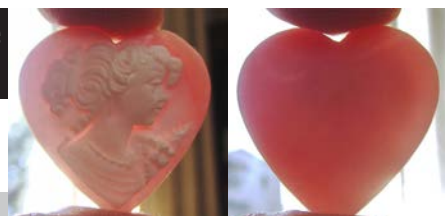
155



**26x26 (mm.) Circa 1930-1950 girlish profile  
Quality heart shaped carved Coral.**

Hand carved Coral heart shaped girlish profile. Measurements is 26 mm. by 26 mm. . Weight is 3.89 grams. From La Clerk Collection, France.

PRICE - \$USD 75.00







**29x21(mm.) Hand carved & Signed Bacchante Angel Skin/Coral stone  
Museum Quality from UK Antique collection. Circa 1895-1910.**

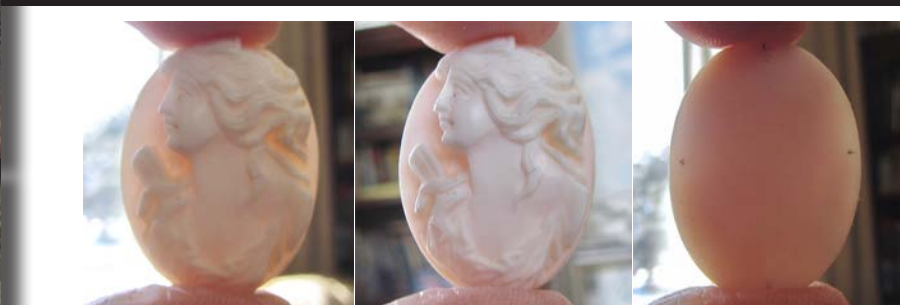


Museum Quality hand carved Angel Skin/  
Coral stone image of Bacchante. Weight  
- 4.09 grams. Measurements - 29mm. by  
21mm. Circa 1910th. Fare Antique condi-  
tions from Elite UK Antique Collection.

PRICE - \$USD 199.00



**28x21(mm.) Rose/White Coral Psyche Goddess of Soul & Sensitive Love  
Quality High Relief hand Victorian carved circa 1880-1900.**

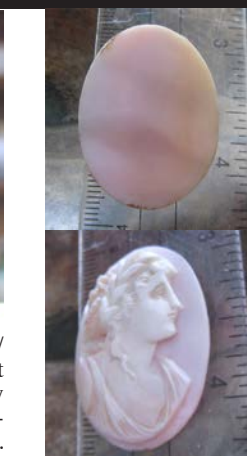
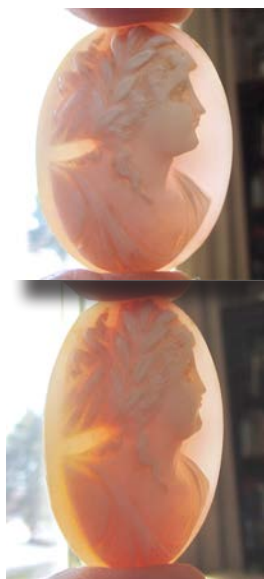


Quality Victorian carving circa 1890 hand carved Coral stone Psyche Goddess of Soul.  
Weight is 6.4grams. Measurements - 28 mm. by 21 mm. . The Perfect Antique conditions.

PRICE - \$USD 129.00



**35x26(mm.) Classic woman in the wreath in her hair  
Quality Hand carved Coral stone. Circa 1895-1915.**



Museum Quality hand carved Angel Skin/  
Coral stone image of Bacchante. Weight  
- 5.3 grams. Measurements - 35mm. by  
26mm. Circa 1910th. Fare Antique condi-  
tions from Elite UK Antique Collection.

PRICE - \$USD 149.00



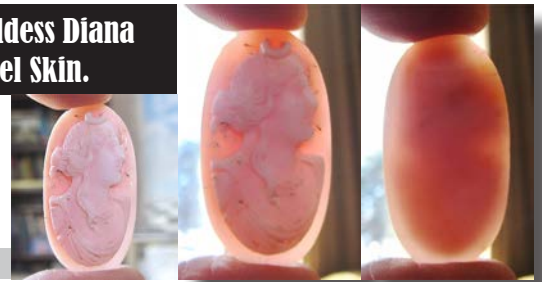
159



**32x17(mm.) Circa 1880-1910 Roman Goddess Diana  
Quality hand carved Rose Coral/Angel Skin.**

Hand carved White Coral/Angel Skin Classic - Roman Goddess Diana profile circa 1880-1910. Measurements is 32 mm. by 17 mm. . Weight is 2.97 grams. The perfect Antique condition from La Clerk Collection, France.

PRICE - \$USD 99.00



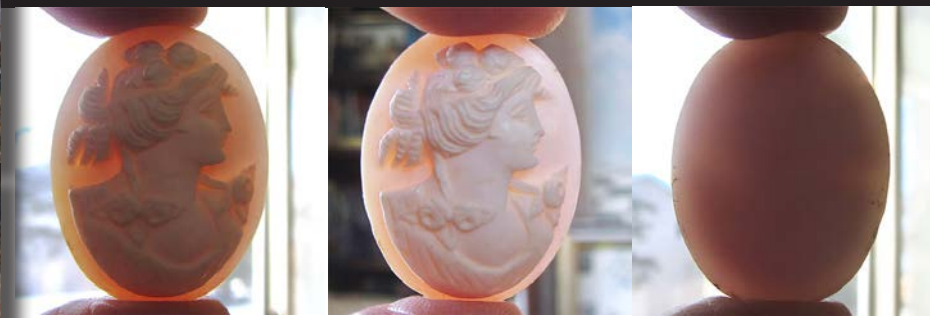
160



**30x23(mm.) Museum Quality Classic Flora Goddess  
Hand carved & Signed circa 1910 Edwardian.**

Quality Edwardian carving circa 1910 hand carved & signed Coral stone. Flora Goddess of Flowers. Weight is 5 grams. Measurements - 30mm. by 23 mm. . The Perfect Antique conditions.

PRICE - \$USD 129.00



161



**29x22 (mm.) Circa 1910 Roman Goddess Ceres  
Quality hand carved White/Rose Coral stone.**

Hand carved and signed White/Rose Coral Classic - Roman Goddess of Fertility Ceres circa 1880 -1910. Measurements is 29 mm. by 22mm. . Weight is 6 grams. The perfect Antique condition from La Clerk Collection, France.

PRICE - \$USD 99.00



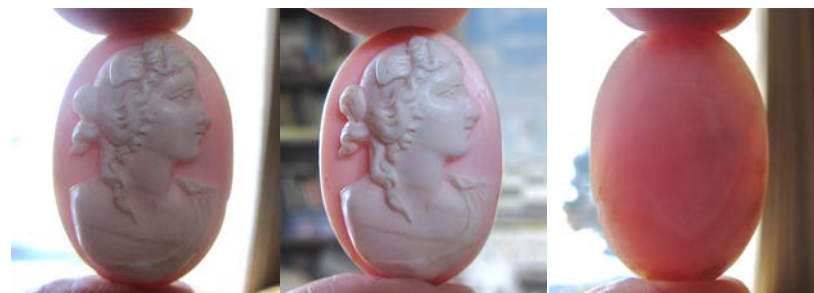
162



**31x21(mm.) Rose/White Coral Psyche Goddess of Soul & Sensitive Love  
Quality High Relief hand Victorian Classic carved circa 1880-1900.**

Quality Victorian Classic circa 1890, hand carved Coral stone depict Psyche - Goddess of Soul, Sex and Sensitive Love. The total weight is 7.82 grams. Measurements - 31 mm. by 21 mm. The perfect Antique condition from La Clerk Collection, Paris, France.

PRICE - \$USD 149.00





163



**25x19 (mm.) Circa 1920-1930 Woman's Portrait  
Quality hand carved /signed Rose Coral stone.**

Hand carved Rose/White Coral Stone - profile young woman, circa 1925. Measurements is 25 mm. by 20 mm. . Weight is 3.27 grams. The Perfect Antique condition from La Clerk Collection, France.

PRICE - \$USD 85.00



164



**24x18 (mm.) Circa 1950-1960 Woman's Portrait  
Quality hand carved /signed Rose Coral stone.**

Hand carved Rose/White Coral Stone - profile young woman with a bird on her shoulder, circa 1955. Measurements is 24 mm. by 18 mm. . Weight is 2.46 grams. The Perfect Antique condition from La Clerk Collection, France.

PRICE - \$USD 75.00



165



**35x27(mm.) Hand carved & signed Coral stone Psyche Soul Goddess  
Museum Quality from UK Antique collection. Circa 1885-1910.**

Museum Quality carved/signed Coral stone. Roman Goddess Psyche. Weight - 5.08 grams. Measurements - 27mm. by 35mm. Circa 1895 Perfect Antique conditions.

PRICE - \$USD 199.00



166



**35x26(mm.) Hand carved & Signed Bacchante Angel Skin/Coral.  
Museum Quality Deep relief stone. Circa 1895-1910.**

Museum Quality hand carved Angel Skin/ Coral stone image of Bacchante. Weight - 11.27 grams. Measurements - 35mm. by 26mm. Circa 1895-1910th. Fare Antique conditions from Elite UK Antique Collection.

PRICE - \$USD 199.00





167

**35x26(mm.) Hand carved Ceres - Goddess of Motherhood Coral.  
Museum Quality Deep relief stone. Circa 1895-1910.**



Museum Quality hand carved Red/White Coral stone image of Ceres Goddess. Weight - 7.34 grams. Measurements - 35mm. by 26mm. Circa 1895-1910th. Fare Antique conditions from Elite UK Antique Collection.  
PRICE - \$USD 179.00

168

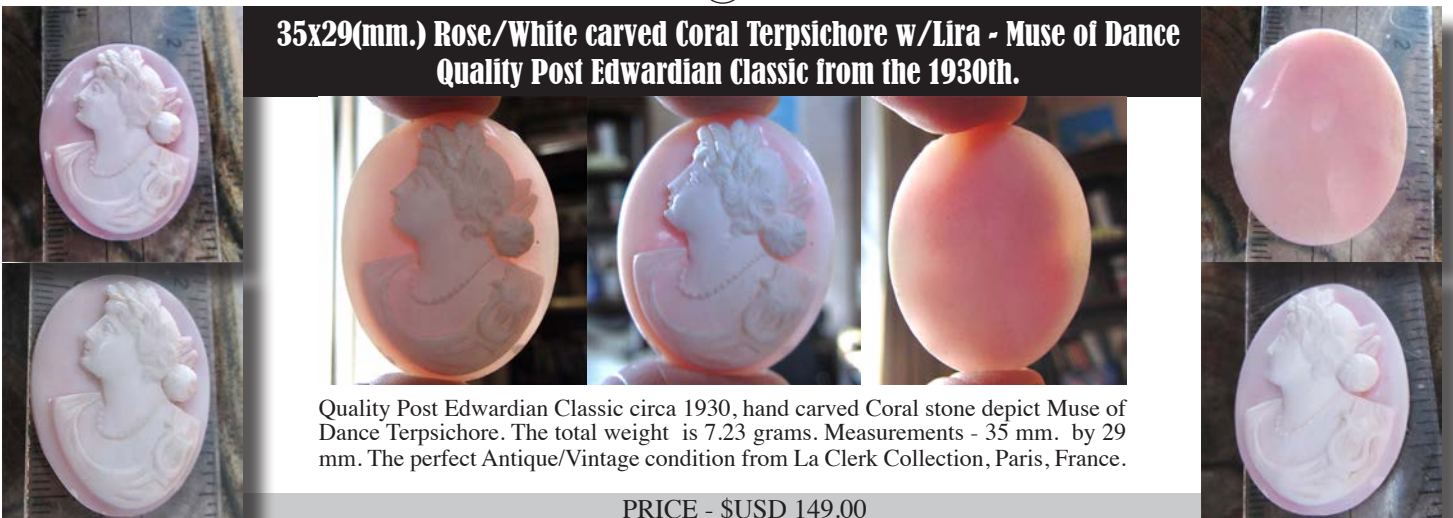
**33x21(mm.) Hand carved & signed Coral stone Edwardian Beauty  
Museum Quality from UK Antique collection. Circa 1905-1915.**



Museum Quality carved/signed Coral stone Edwardian Beauty. Weight - 7.3 grams. Measurements - 33mm. by 21mm. Circa 1910 Perfect Antique conditions, from UK collection  
PRICE - \$USD 199.00

169

**35x29(mm.) Rose/White carved Coral Terpsichore w/Lira - Muse of Dance  
Quality Post Edwardian Classic from the 1930th.**



Quality Post Edwardian Classic circa 1930, hand carved Coral stone depict Muse of Dance Terpsichore. The total weight is 7.23 grams. Measurements - 35 mm. by 29 mm. The perfect Antique/Vintage condition from La Clerk Collection, Paris, France.

PRICE - \$USD 149.00





**40x29(mm.) Rose/White carved Coral Terpsichore w/Lira - Muse of Dance**  
**Big high relief quality carved and signed stone 1910-1930.**



Quality PostEdwardian/Edwardian 1910 - 1930, handcarved and signed high relief Coral stone depict Muse of Dance Terpsichore. The total weight is 12.78 grams. Measurements - 40 mm. by 30 mm. The perfect Antique/Vintage condition from La Clerk Collection, Paris, France.

PRICE - \$USD 199.00



**39x34(mm.) Stylish Hand Carved & Signed Angel Skin/Coral.**  
**Museum Quality Deep relief stone. Circa 1875-1890.**



Museum Quality hand carved & signed Angel Skin/Coral stone profile. Weight - 14.2 grams. Measurements - 39mm. by 34mm. Circa 1875-1890. The perfect Antique conditions from Elite UK Antique Collection.

PRICE - \$USD 199.00



**35x27(mm.) Hand carved Coral/Angel Skin Psyche Soul Goddess**  
**Museum Quality from UK Antique collection. Circa 1895-1915.**



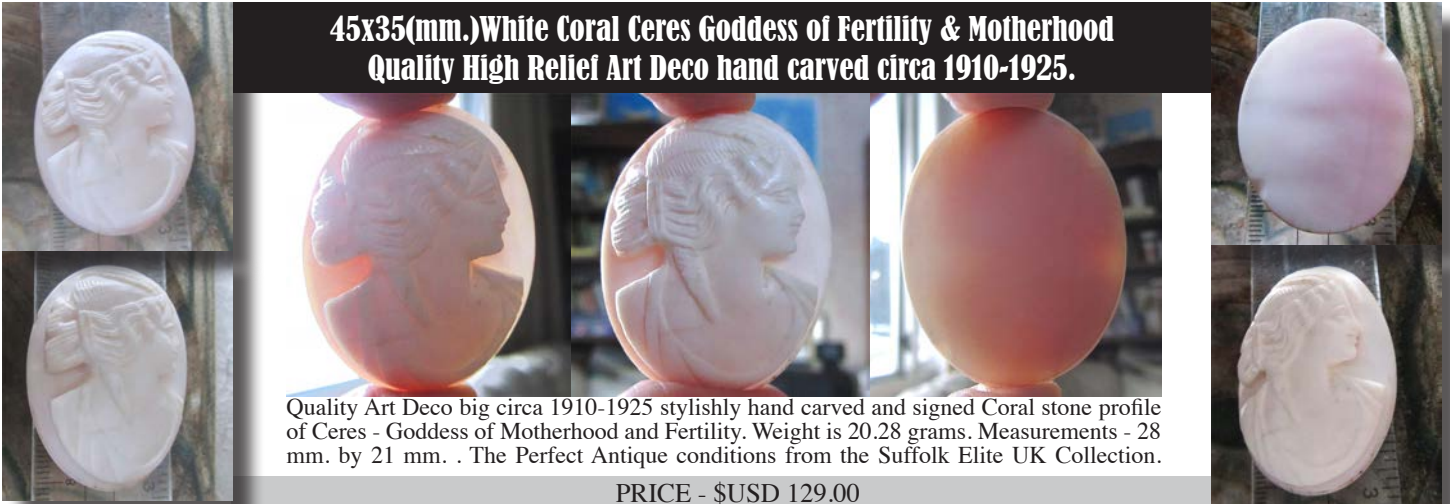
Museum Quality carved/signed Angel Skin/Coral stone. Roman Goddess Psyche. Weight - 6 grams. Measurements - 27mm. by 35mm. Circa 1910 Perfect Antique conditions from Elite Collection.

PRICE - \$USD 199.00





**45x35(mm.) White Coral Ceres Goddess of Fertility & Motherhood  
Quality High Relief Art Deco hand carved circa 1910-1925.**



Quality Art Deco big circa 1910-1925 stylishly hand carved and signed Coral stone profile of Ceres - Goddess of Motherhood and Fertility. Weight is 20.28 grams. Measurements - 28 mm. by 21 mm. . The Perfect Antique conditions from the Suffolk Elite UK Collection.

PRICE - \$USD 129.00



**50x38(mm.) Hand carved Goddess of Hunting and Purity Diana.  
Museum Quality Huge Angel Skin/Coral stone circa 1895-1910.**



Museum Quality hand carved Angel Skin/ Coral stone image of Diana Goddess. Weight - 16.93 grams. Measurements - 38mm. by 50mm. Circa 1895-1910. Fare Antique conditions from Elite UK Antique Collection.

PRICE - \$USD 299.00



**42x35(mm.) Carved light Coral Male/Female double portrait Classic  
Museum Quality from UK Antique collection. Circa 1840-1870.**



Museum Quality Victorian carving light Coral stone circa 1860 Classic Male/ Female Antique double portrait. Weight - 8.96 grams. Measurements - 1-5/8" tall and 1-3/8" wide. The Perfect Antique conditions from UK Antique Collection.

PRICE - \$USD 199.00



**39x29(mm.) White/Rose Coral - Goddess of Motherhood Demetra  
Big high relief quality carved and signed stone circa 1910-1935.**



Quality PostEdwardian/Edwardian 1910-1935, hand carved and signed high relief Coral stone depict Demetra- Goddess of Motherhood. The total weight is 9.2 grams. Measurements - 39 mm. by 29mm. The perfect Antique/Vintage condition from La Clerk Collection, Paris, France.

PRICE - \$USD 149.00

**25x19 (mm.) Circa 1890-1910 Classic Psyche Profile  
Victorian hand carved & signed Coral stone.**



Really greatly hand carved traced Victorian/Edwardian Coral Stone - 1890 - 1910. Measurements is 25 mm. by 19 mm. . Weight is 2.4 grams. The Perfect Antique condition from La Clerk Collection, France.

PRICE - \$USD 59.00

**30x20 (mm.) Circa 1890-1910 Classic Bacchante  
Traced, hand carved & signed Coral stone.**



Really greatly hand carved, signed and traced Victorian/Edwardian Coral Stone - 1890 - 1910. Measurements is 30 mm. by 20 mm. . Weight is 4.08 grams. The Perfect Antique condition from La Clerk Collection, France.

PRICE - \$USD 79.00

**40x30(mm.) Hand carved Coral stone - Psyche Goddess of Soul  
Museum Quality from UK Antique collection. Circa 1895-1915.**



Museum Quality carved/signed Angel Skin/Coral stone. Roman Goddess Psyche. Weight - 6 grams. Measurements - 27mm. by 35mm. Circa 1910 Perfect Antique conditions from Elite Collection.

PRICE - \$USD 225.00





**32x17 (mm.) Circa 1910 Roman Goddess Classic  
Museum Quality hand carved Coral stone.**

Hand carved Museum Quality White/Rose Coral Classic - Goddess from the 1890-1910. Measurements is 29 mm. by 22mm. . Weight is 2.72grams. The perfect Antique condition from La Clerk Collection, France.

PRICE - \$USD 129.00



**24(mm.) Diameter Hand carved light Coral stone signed profile  
Museum Quality signed hand carving circa 1915-1935.**



Museum Quality hand carved and signed light Coral stone. Young girl from Edwardian/Post Edwardian period. Total Weight - 3.49 grams. Measurements - 24 mm. Diameter. The Perfect Antique conditions from La Clerk Collection. Purchased in 1997 Paris, France.

PRICE - \$USD 159.00



**28x21 (mm.) Circa 1910 Goddess of Moon Selena  
Great Quality hand carved Coral stone.**

Hand carved Quality White Coral Classic -Roman Goddess of the Moon Selena, from the 1900 -1910. Measurements is 28 mm. by 21mm. . Weight is 3.94 grams. The perfect Antique condition from La Clerk Collection, France.

PRICE - \$USD 99.00



**25x18(mm.) 2 Museum Quality Bacchantes  
Hand carved & signed Coral circa 1890.**

Couple High relief, hand carved and signed Museum Quality circa 1890 Coral Stones. Measurements is 25mm. by 18mm. . Total Weight is 7.9 grams. From La Clerk Collection, France.

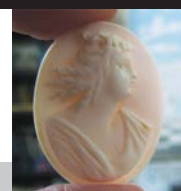
PRICE - \$USD 169.00



**30x23 (mm.) Valkyrie-servant of Odin from 1910th  
Quality hand carved & signed Coral stone.**

Hand carved and signed by The Artist, quality White Coral Classic - Valkyrie(servant of God Odin), from the 1910-1915. Measurements is 30mm. by 23mm. . Weight is 3.62 grams. The perfect Antique condition from La Clerk Collection, France.

PRICE - \$USD 99.00







**34x26(mm.) White/Rose Coral - Ancient Roman Goddess  
Quality carved and signed stone circa 1890-1915.**



Quality PostEdwardian/Edwardian 1890 - 1915, hand carved and signed high relief Coral stone depict Ancient Roman Goddess (Seres?). The total weight is 6.91 grams. Measurements - 34 mm. by 26mm. The perfect Antique/Vintage condition from La Clerk Collection, Paris, France.

PRICE - \$USD 149.00



**18x12 (mm.) Art Nouveau profile from 1890-1910  
Quality hand carved White/Rose Coral stone.**



Well Hand carved White/Rose Coral Classic - Roman Goddess or Bacchante circa 1880 - 1910. Measurements is 18 mm. by 12mm. . Weight is 1.58 grams. The perfect Antique condition from La Clerk Collection, France.

PRICE - \$USD 59.00



**30x23 (mm.) Circa 1915 Roman Goddess Ceres  
Quality hand carved White/Rose Coral stone.**

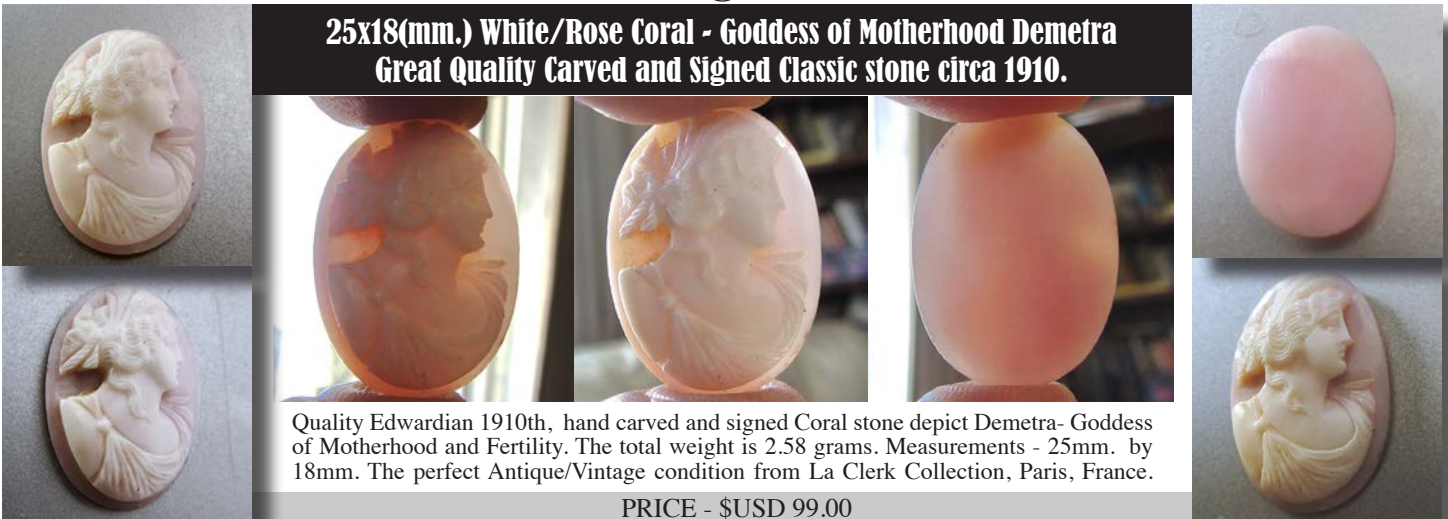


Well hand carved White/Rose Coral Classic - Roman Goddess of Motherhood and Fertility Ceres circa 1915. Measurements is 30mm. by 23mm. . Weight is 6 grams. The perfect Antique condition from La Clerk Collection, France.

PRICE - \$USD 99.00



**25x18(mm.) White/Rose Coral - Goddess of Motherhood Demetra  
Great Quality Carved and Signed Classic stone circa 1910.**



Quality Edwardian 1910th, hand carved and signed Coral stone depict Demetra- Goddess of Motherhood and Fertility. The total weight is 2.58 grams. Measurements - 25mm. by 18mm. The perfect Antique/Vintage condition from La Clerk Collection, Paris, France.

PRICE - \$USD 99.00



**20x16 (mm.) Circa 1915 Art Deco Goddess Ceres  
Quality hand carved White/Rose Coral stone.**

Well hand carved White/Rose Coral Classic - Roman Goddess of Motherhood and Fertility Ceres circa 1915. Measurements is 20mm. by 16mm. . Weight is 2.07 grams. The perfect Antique condition from La Clerk Collection, France.

PRICE - \$USD 49.00



**30x22 (mm.) Circa 1915-1935 Art Deco Muse  
Hand carved & signed Coral stone.**

Well hand carved White/Rose Coral Classic - Roman Muse Terpsichore carved and signed circa 1915 - 1935. Measurements is 20mm. by 16mm. . Weight is 5.15 grams. The perfect Antique condition from La Clerk Collection, France.

PRICE - \$USD 89.00



**35x25(mm.) The White Coral stone - Diana Goddess of Purity & Hunting  
Great Quality hand carved and signed circa 1910th Edwardian.**



Quality Victorian carving circa 1910 hand carved Coral stone Diana Goddess of Purity and Hunting. Weight is 7.25 grams. Measurements - 35mm. by 25mm. . The Perfect Antique conditions from UK.

PRICE - \$USD 179.00



**45x32(mm.) White/Rose Coral - Goddess of Motherhood Demetra  
Museum Quality Carved and Signed Classic stone circa 1890-1910.**



Quality Victorian 1890-1910, hand carved and signed Coral stone depict Demetra/Ceres - Goddess of Motherhood and Fertility. The total weight is 13.28 grams. Measurements - 25mm. by 18mm. The perfect Antique/Vintage condition from La Clerk Collection, Paris, France.

PRICE - \$USD 229.00





**38x30(mm. ) Hand carved High relief Coral stone  
Museum goddess Pleione who is guided sailors.**



High Relief carved Coral stone Pleione - Goddess of sailors Weight - 12.73 grams. Measurements - 38mm.x30mm.x7mm..1890- 1910. The good Antique conditions, from UK collection

PRICE - \$USD 169.00

**40x35(mm.) Stylish Hand Carved & Signed Selena Goddess of Moon.  
Museum Quality High relief Coral stone. Circa 1915-1930.**



Quality hand carved & signed Coral stone Art Deco Selena goddess. Weight - 9.86grams. Measurements - 40mm. by 35 mm. Circa 1920. The perfect Antique conditions from Elite UK Antique Collection.

PRICE - \$USD 199.00

**50x36(mm. ) Hand carved High relief White Coral stone  
Museum Quality Huge Beauty from the 1915-1935 .**



High Relief big carved Coral stone Weight - 15.8 grams. Measurements - 50mm. x 36mm. x 7mm.. 1910-1935. The Perfect Antique conditions from Elite UK Antique Collection.

PRICE - \$USD 249.00





**35(mm.) Diameter hand carved Ceres - Goddess of Motherhood.  
Museum Quality Deep relief Coral stone. Circa 1895-1910.**



Museum Quality hand carved Red/White Coral stone Classic image of Ceres Goddess. Weight - 9.8 grams. Measurements - 35mm. n Diameter. Circa 1895-1910th. The Perfect Antique conditions from Elite UK Antique Collection.

PRICE - \$USD 279.00



**44x33(mm.) White/Rose Coral - Roman Classic profile  
Great Quality Carved and Signed stone circa 1910.**



Quality Edwardian 1910th, hand carved and signed Coral stone depict The big Classic Roman profile. The total weight is 15.98 grams. Measurements - 44mm. by 33mm. The perfect Antique condition from Elite Connecticut Collection .

PRICE - \$USD 229.00



**50x41(mm.) Hand carved Goddess of Hunting and Purity Diana.  
Quality Huge Victorian Coral stone circa 1860-1880.**



Museum Quality hand carved Coral stone image of Diana Goddess. Weight - 11.96 grams. Measurements - 38mm. by 50mm. Circa 1895-1910. The Perfect Antique conditions from Elite UK Antique Collection.

PRICE - \$USD 299.00



199

**44x34(mm.) Hand carved Ceres - Goddess of Motherhood Coral.  
Big Museum Quality Deep relief stone. Circa 1895-1910.**

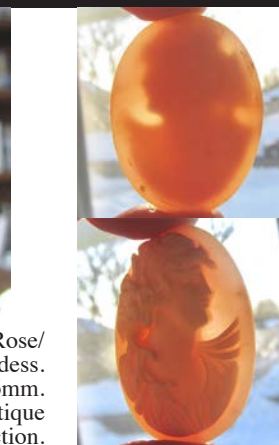


Museum Quality hand carved Red/White Coral stone image of Ceres Goddess. Weight - 9.68 grams. Measurements - 44mm. by 34mm. Circa 1895-1910. Fare Antique conditions from Elite UK Antique Collection.

PRICE - \$USD 269.00

200

**46x34(mm.) Hand carved & signed Ceres - Goddess of Motherhood.  
Big Museum Quality Deep relief Coral stone. Circa 1895-1910.**



Museum Quality hand carved & signed Rose/White Coral stone image of Ceres Goddess. Weight - 10.84 grams. Measurements - 46mm. by 34mm. Circa 1895-1910. Perfect Antique conditions from Elite UK Antique Collection.

PRICE - \$USD 249.00

201

**52x36(mm.) Museum Quality - Civil War John Lebreghos portrait  
Carved and Signed Classic Coral stone 1863.**



Museum Quality, hand carved and signed "John Lebreghos (?) 1863" Coral stone. The total weight is 24.11 grams. Measurements - 52mm. by 36mm. The perfect Antique condition.



PRICE - \$USD 779.00





**14x19(mm.) Two ancient Roman goddess  
Hand carved Coral circa 1900-1910.**

Two high relief well hand carved Rose/White Coral Stone images of (1900 - 1910) Goddess's. Measurements is 14 mm. by 9 mm. . Weight is 1.64 grams. The Antique condition from La Clerk Collection.

PRICE - \$USD 49.00



**10x8(mm.) 2 roses & 1 Roman profile  
Hand carved Angel Skin circa 1900-1930.**

Three high relief well hand carved Rose/White Angel Skin Stone images of (1910 - 1930) Roses & Goddess's. Approx. measurements is 10mm. by 9mm. . Total weight is 1.64 grams. The Great Antique condition from La Clerk Collection.

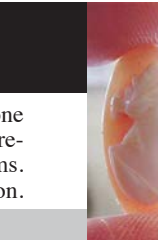
PRICE - \$USD 99.00



**22x11(mm.) & 12x9(mm.) Classic profiles  
Hand carved Coral stone circa 1900-1910.**

Three high relief well hand carved Rose/White Coral Stone images of (1910 - 1910) Goddess's Demetre. Measurements is 22x11(mm.) & 12x9(mm.). Total weight is 2 grams. The Great Antique condition from La Clerk Collection.

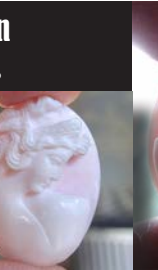
PRICE - \$USD 69.00



**25x19 (mm.) Circa 1910 Medusa Gorgoneon  
Quality hand carved Art Deco Coral stone.**

Well hand carved White/Rose Coral Classic - Greek Mythological Medusa Gorgoneon circa 1910. Measurements is 25mm. by 19mm. . Weight is 5 grams. The perfect Antique condition from La Clerk Collection, France 1997.

PRICE - \$USD 79.00



**24x18 (mm.) Edwardian Psyche - Goddess of Soul  
Quality hand carved/signed Coral circa 1910.(L)**

Well hand carved and signed Coral Classic - Edwardian Bacchante priestess circa 1910. Measurements is 25mm. by 19mm. . Weight is 3.001 grams. The perfect Antique condition from La Clerk Collection, France 1997.

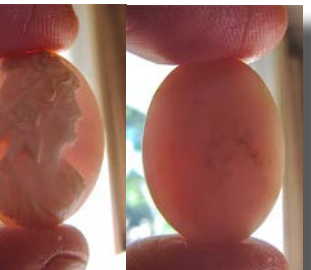
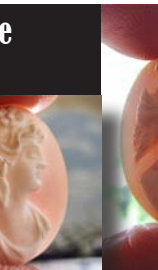
PRICE - \$USD 79.00



**25x19 (mm.) Circa 1910 Edwardian Bacchante  
Quality hand carved /signed Coral stone.**

Well hand carved and signed Coral Classic - Edwardian Bacchante priestess circa 1910. Measurements is 25mm. by 19mm. . Weight is 3.61 grams. The perfect Antique condition from La Clerk Collection, France 1997.

PRICE - \$USD 79.00







**20x14 (mm.) Circa 1890 Victorian Classic  
Detail hand carved/signed Coral stone.**

Well hand carved and signed Coral Classic - tiny Victorian Classic circa 1890. Measurements is 20mm. by 14mm. . Weight is 1.99 grams. The perfect Antique condition. Purchased from La Clerk Collection, France 1997.

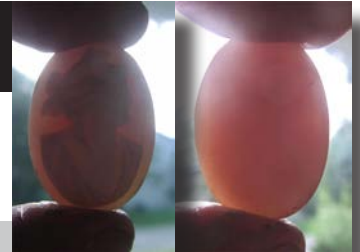
PRICE - \$USD 49.00



**24x18 (mm.) Circa 1890 Ceres Goddess of Motherhood  
Detail hand carved Victorian Coral stone.**

Well hand carved and signed Coral Classic - tiny Victorian Classic Ceres Goddess circa 1890. Measurements is 24mm. by 18mm. . Weight is 3.29 grams. The perfect Antique condition. Purchased from La Clerk Collection, France 1997.

PRICE - \$USD 49.00



**40x30 (mm.) Edwardian Psyche - Goddess of Soul  
Big hand carved/signed Coral circa 1910.**

Well hand carved and signed Coral Classic - Edwardian Psyche - Goddess of Soul circa 1910. Measurements is 40mm. by 30mm. . Weight is 11.33 grams. The perfect Antique condition from La Clerk Collection, France 1997.

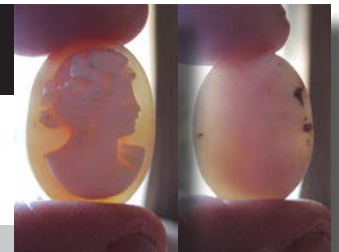
PRICE - \$USD 89.00



**19x14 (mm.) Beauty from circa 1910th - 1920th  
Detail hand carved Edwardian Coral stone.**

Well hand carved and signed Coral Classic - tiny Edwardian/Post Edwardian Beauty circa 1910th-1920th. Measurements is 19mm. by 14mm. . Weight is 1.75 grams. The perfect Antique condition. Purchased from La Clerk Collection, France 1997.

PRICE - \$USD 49.00



**33x25(mm.) Hand carved Classic Goddess Profile.  
Quality Edwardian Coral stone circa 1905-1910.**

Quality hand carved Coral stone image Edwardian goddess. Weight - 5.3 grams. Measurements - 33mm. by 25mm. Circa 1910. The Perfect Antique conditions from Elite UK Antique Collection.

PRICE - \$USD 169.00



213



**24x18 (mm.) Circa 1880-1900 Victorian Psyche Goddess  
Detail hand carved Classic White/Rose Coral stone.**

Great hand carved Victorian Coral Classic circa 1890 - Goddess of Soul. Measurements is 24mm. by 18mm. . Weight is 2.06 grams. The perfect Antique condition. Purchased from La Clerk Collection, France 1997.

PRICE - \$USD 79.00



214



**29x23 (mm.) Post Edwardian Beauty  
Hand carved Coral stone circa 1925.**

Well hand carved and signed Coral Classic - Edwardian Beauty circa 1920-1935. Measurements is 29mm. by 23 mm. . Weight is 4.77 grams. The perfect Antique condition from La Clerk Collection, France 1997.

PRICE - \$USD 79.00



215



**25x18 (mm.) Edwardian Beauty circa 1910  
Hand carved/signed Coral stone.**

Well hand carved and signed Coral Classic - Edwardian Beauty circa 1910-1915. Measurements is 25 mm. by 18 mm. . Weight is 2.63 grams. The perfect Antique condition from La Clerk Collection, France 1997.

PRICE - \$USD 79.00



216



**29x22 (mm.) Edwardian female circa 1910  
Hand carved Coral Classic stone.**

Well hand carved Coral Classic - Edwardian Beauty circa 1910-1915. Measurements is 29 mm. by 22 mm. . Weight is 5.34 grams. The perfect Antique condition from La Clerk Collection, France 1997.

PRICE - \$USD 79.00



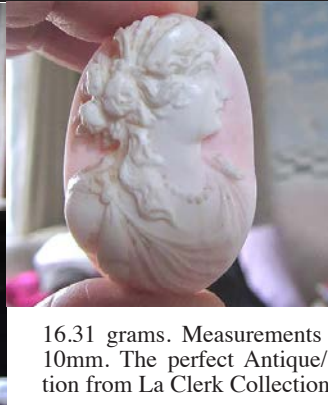
217



**44x29(mm.) White/Rose Coral - Goddess of Motherhood Demetra  
Quality Carved High relief stone circa 1890 - 1910 Victorian Classic.**

Quality Edwardian 1910th, hand carved and signed Coral stone depict Demetra- Goddess of Motherhood and Fertility. The total weight is 16.31 grams. Measurements - 44mm.x29x-10mm. The perfect Antique/Vintage condition from La Clerk Collection, Paris, France.

PRICE - \$USD 229.00





218



**25x20 (mm.) Edwardian Classic female circa 1910  
Hand carved Coral stone from France.**



Well hand carved Coral Classic - Edwardian Beauty circa 1910-1915. Measurements is 25 mm. by 20mm. . Weight is 3.09 grams. The perfect Antique condition from La Clerk Collection, France 1997.

PRICE - \$USD 79.00



219



**34x25 (mm.) Edwardian/Post Edwardian female Beauty  
Hand carved/signed Coral Classic stone circa 1910.**

Well hand carved Coral Classic - Post/Edwardian Beauty circa 1910-1915. Measurements is 34 mm. by 25 mm. . Weight is 8.13 grams. The perfect Antique condition from La Clerk Collection, France 1997.

PRICE - \$USD 99.00



220



**25x18 (mm.) Edwardian/Victorian circa 1890-1910  
Hand carved/signed Coral stone Beauty.**



Well hand carved and signed white Coral Classic - Victorian/Edwardian Beauty circa 1890-1910. Measurements is 25 mm. by 18 mm. . Weight is 2.73 grams. The perfect Antique condition from La Clerk Collection, France 1997. (215)(218).

PRICE - \$USD 59.00

