



ANTIQUE
Cameo
GALLERY
UNMOUNTED LANDSCAPE

Let me introduce my family's passion for the past four generations: My Old Cameo collection contains 10 different collections:

1. Solid Gold Framed
2. Solid Silver Sterling & Coin Silver Framed
3. Gold filled • Gold Plated • Gold Washed Framed
4. Unmounted
5. Unmounted Cameos with Diamonds
6. Unmounted Modern
7. Unmounted Coral & Angel Skin
8. Unmounted Landscapes
9. Unmounted Mather Pearl
10. Conch Shells

Cameos date back more than 5,000 years, with each cameo reflecting the culture and style of its time period. They were also used as government assets in the many countries around the world, and are considered a reliable investment, as prices of antique, high quality cameos are predicted by many collectors to continue to rise. Most of the items represented in my collection are from the end of the 19th to the beginning of the 20th centuries. I also have some cameos from as early as the 18th century as well as a few modern pieces. The majority of my collection was produced in Italy and England France, Russia and Germany, followed by pieces from the United States, Italy, . The majority were carved from Carnelian and Sardonyx Sea Shell as well as Mother of Pearl Shell and corals. The collection also contains some hard stone cameos from agate, opal and bone.

Using my background as a Graphic Artist and Art Historian, I established criteria which guided the creation of my cameo collection.

The major criteria were craftsmanship and esthetic's. Secondary criteria included historical value, followed by materials, including metal, stone, bone, etc. The collection also comes with a catalog which includes a full description and historical background of each piece, and was meticulously created as my family amassed this collection over the years. This well organized, beautifully created catalog will help the collectors to keep track of this unique and valuable asset, whose value will only increase with time as prices of quality antique cameos continue to rise in the present time.

AntiqueCameoGallery.com

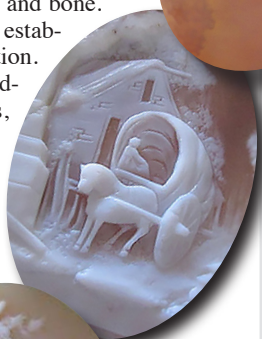
UNMOUNTED LANDSCAPES

This catalog represents the **UNMOUNTED LANDSCAPE CAMEOS COLLECTION** or "Rebekah at the Well" Classic from "The Antique Cameo Gallery Collection." This collection includes **ONLY** hand-carved cameos. The biggest part of this collection was purchased from The Gerardy Antique Collection, 1997 Paris, France. The major criteria for this collection included craftsmanship and esthetic's. The collection also comes with a catalog highlighting the artistry and history of each piece. According to cameo experts, the prices of cameos have doubled every 6-7 years and will continue to do so. The price of this collection is 2-4 times less than regular retail price, in order to sell it in one piece. Big percentage of this collection - **Museum Quality.**

Prices for this collection are 3-4 times less than retail.

You can verify my prices in the book and online by Clements, Monica L., and Patricia R. Clements. *Cameos, A Pocket Guide*. Revised 3rd ed., Atglen, PA,

Schiffer, 2011. or use the following online reference: <https://www.youtube.com/watch?v=PK0x89vSjvs> or <https://www.youtube.com/watch?v=84Sn87txzdg>





**25x19(mm.) Very Old 1860-1880 Shell
Two buildings Good Quality Cameo**

Anicely carved Antique Victorian petite Shell depict detailing landscape from second part of XIX century. This measures 1" with overall and tall size of the Cameo is 3/4". Shell is in good condition. Amazing art stile "Bidermayer" (before Art Nouveau Stile)

PRICE - \$USD 79.00



**31x25(mm.) Very Old 1840-1860
Good Quality See Shell Victorian Cameo**

A very nicely carved and signed Antique Victorian Shell Cameo. Two woman close to house and tree. Really Old cameo circa 1850. Nicely carved. This measures 1-1/4" tall overall and with size of the Cameo is 1". This one is in very good condition. Amazing "Bidermayer" (before Art Nouveau Style). From Historical UK Collection

PRICE - \$USD 89.00



**42x34 Landscape with tree and woman.
Circa 1870**

Made in 1860-1880 Unmounted light Sardonyx Shell depict woman at the Country Landscape. Measurements is 42 mm. by 34 mm.. Beautiful in right lights. Good condition.

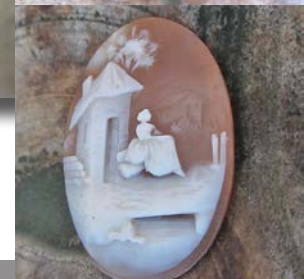
PRICE - \$USD 85.00



**38x30 Landscape with a woman sitting at the house.
Circa 1880 Detailing Sardonyx hand carved shell.**

Made in 1880th Unmounted dark Sardonyx Shell depict woman sitting at the house in the Country Landscape. Measurements is 38 mm. by 30 mm.. Beautiful in right lights. Good condition from UK Collection.

PRICE - \$USD 99.00





32 by 40 mm. Landscape with woman, tree and fence . Circa 1870



Made in 1860-1880 Unmounted light Sardonyx Shell Cameo. Total dimensions is 1-1/4" by 1-1/2" or 32 mm. by the 40 mm. with height. Very old. Perfect Antique condition. Beautiful in right lights. From Gerardy Antique. Collection

PRICE - \$USD 89.00



**13x10 (mm.) 3 Petite shells from 1870-1880
Landscape with woman at the tree.**

Made in 1860-1880 Unmounted 3 Shells Cameo. Total dimensions 1/2" is 3/8" by or 13 mm. by 10 mm. with height. Very old. Perfect Antique condition. From Gerardy Antique Collection, France, Paris.

PRICE - \$USD 99.00



**22x17 (mm.) Well carved Light Sardonyx shell from 1870-1880
Woman at the house and tree.**

Made in 1870-1880 Unmounted Shell Cameo. Total dimensions 5/8" is 7/8" by or 17 mm. by 22° mm. with height. Very old. Perfect Antique condition. From Gerardy Antique Collection, France, Paris.

PRICE - \$USD 55.00



**19x15 (mm.) Well carved Light Sardonyx shell from 1870-1880
Woman at the tower and tree. Signed by the Artist**

Unmounted carved and signed by the Artist in 1870-1880 Shell. Total dimensions 3/4" is 5/8" by or 19 mm. by 15 mm.. Very old. Perfect Antique condition. From Gerardy Antique Collection, France, Paris.

PRICE - \$USD 59.00



**18x13 (mm.) Well carved Light Sardonyx shell from 1870-1880
Woman at the tower and tree. Signed by the Artist**

Unmounted carved and signed by the Artist in 1870-1880 Shell. Total dimensions 3/4" is 5/8" by or 19 mm. by 15 mm.. Very old. Perfect Antique condition. From Gerardy Antique Collection, France, Paris.

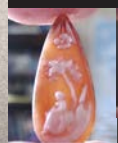
PRICE - \$USD 49.00



**20x8 & 10x7 (mm.) 2 Petite shells from 1870-1880
Landscape with woman at the tree.**

Made in 1860-1880 Unmounted 2 Shells Cameo. Dimensions first - 20 mm. by 8 mm. & 10 mm. by 7 mm.. Very old. Good Antique condition. From Gerardy Antique Collection, France, Paris.

PRICE - \$USD 69.00





**23x14 (mm.) Well carved Light Sardonyx shell from 1870-1880
Woman at the tower and tree. Signed by the Artist**



Unmounted carved and signed by the Artist in 1870-1880 Shell. Total dimensions is 15/16" by 5/8" or 23mm. by 14 mm. . Very old. Perfect Antique condition. From Gerardy Antique Collection, France, Paris.

PRICE - \$USD 49.00

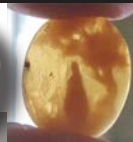


**20x16 (mm.) Well carved dark Sardonyx shell from 1870-1880
Woman at the tree. Signed by the Artist**



Unmounted carved and signed by the Artist in 1870-1880 Shell. Total dimensions 3/4" is 5/8" by or 19 mm. by 15 mm. . Very old. Perfect Antique condition. From Gerardy Antique Collection, France, Paris.

PRICE - \$USD 49.00



**13x9 (mm.) Well carved petite Light Sardonyx shell
Woman at the house and tree, from 1870-1880.**



Made in 1870-1880 Unmounted Shell Cameo. Total dimensions 1/2" is 1/3" by or 13 mm. by 9 mm. with height. Very old. Perfect Antique condition. From Gerardy Antique Collection, France, Paris.

PRICE - \$USD 39.00



**24x16 (mm.) Hand carved Gold Sardonyx shell from 1870-1880
Woman at the palm tree. Signed.**



Unmounted carved and signed by the Artist in 1870-1880 Shell. Total dimensions 3/4" is 5/8" by or 19 mm. by 15 mm. . Very old. Perfect Antique condition. From Gerardy Antique Collection, France, Paris.

PRICE - \$USD 39.00

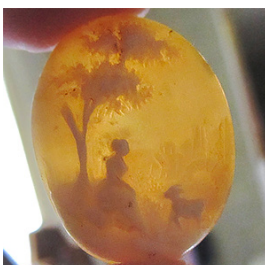


**19x15 (mm.) Well carved Sardonyx shell
Woman at the tree. From 1870-1880**



Unmounted carved and signed by the Artist in 1870-1880 Shell. Total dimensions 3/4" is 5/8" by or 19 mm. by 15 mm. . Very old. Perfect Antique condition. From Gerardy Antique Collection, France, Paris.

PRICE - \$USD 39.00

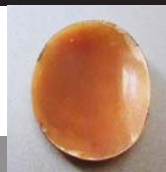


**29x23 (mm.) Great hand carved dark Sardonyx shell from 1870-1880
Landscape - woman at the tree with a goat. Signed by the Artist**



Unmounted carved and signed by the Artist in 1870-1880 Shell. Total dimensions 3/4" is 5/8" by or 19 mm. by 15 mm. . Very old. Perfect Antique condition. From Gerardy Antique Collection, France, Paris.

PRICE - \$USD 99.00



17

**21x15 (mm.) Hand carved gold Sardonyx shell
Woman at the house, from 1870-1880.**

Made in 1870-1880 Unmounted Shell Cameo. Total dimensions is 4/5" by 5/8" or 21 mm. by 15 mm. height, with weight 0.9 grams. . Perfect Antique condition. From Gerardy Antique Collection, Paris, France.

PRICE - \$USD 39.00

18

**20x14 (mm.) Hand carved gold Sardonyx shell
Woman at the house & tree, circa 1880.**

Made in 1870-1890 Unmounted thick Shell Cameo. Total dimensions is 4/5" by 5/8" or 20 mm. by 14 mm. height, with weight 2 grams. . Perfect Antique condition. From Gerardy Antique Collection, Paris, France.

PRICE - \$USD 39.00

19

**43x33 Landscape with cabriolet at the smith's house.
Circa 1880 Detailing superior hand carved shell.**

Made in 1880th Unmounted Sardonyx Shell depict Cabriolet at the smoking kiln at smith house in the Country Landscape. Measurements is 43 mm. by 33 mm. .Weight - 6.32 grams Good condition from UK Collection.

PRICE - \$USD 149.00

20

**46x38(mm). Woman at the castle at the bank of the river landscape
Circa 1870-1890 hand carved light sardonyx shell.**

Made in 1880th Unmounted light Sardonyx Shell depict woman at the castle at the river bank in the village Landscape. Measurements is 46 mm. by 38 mm. .Weight - 7.26 grams. From Gerardy Antique Collection, Paris, France.

PRICE - \$USD 99.00

21

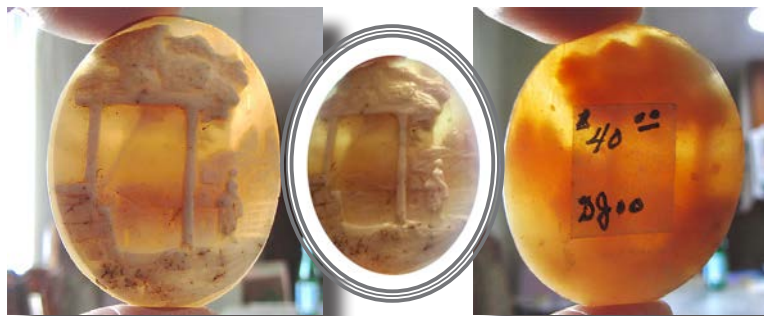
**40x32(mm). Woman at the perspective village landscape
Circa 1880 hand carved gold sardonyx shell.**

Made in 1880th unmounted gold Sardonyx Shell depict woman at the tower at the riverbank in the village landscape. Measurements is 40 mm. by 32 mm. Signed by the Artist. Weight - 5.15 grams. From Gerardy Antique Collection, Paris, France.

PRICE - \$USD 139.00

22

**41x33(mm). Woman at the perspective village landscape
Circa 1880 Great hand carved gold sardonyx shell.**



Made in 1880th unmounted gold Sardonyx hand carved Museum Quality shell depict woman at the village landscape. Measurements is 41 mm. by 33 mm. Signed by the Artist. Weight - 7.22 grams. The perfect Antique condition from Gerardy Antique Collection, Paris, France.

PRICE - \$USD 159.00

23

**40x33 Landscape with a woman sitting at the tree.
Circa 1880 Hand carved Light Sardonyx shell.**



Made in 1880th Unmounted dark Sardonyx Shell depict woman sitting at the house in the Country Landscape. Measurements is 40 mm. by 33 mm. The perfect Antique condition from Gerardy Antique Collection, Paris, France, 1997.

PRICE - \$USD 159.00

**40x33(mm). Woman at the house and tree with bridge at horizon.
Circa 1880 Great hand carved gold sardonyx shell.**



Made in 1880th Sardonyx hand carved Quality shell depict woman at the village landscape. Measurements is 40mm. by 33mm. .Weight - 10.47 grams. The perfect Antique condition from Gerardy Antique Collection, Paris, France.



PRICE - \$USD 179.00

**38x30(mm). Woman at the tower and fence scene
Circa 1890 hand carved gold sardonyx shell.**



Made in 1890-1900, hand carved unmounted gold Sardonyx Shell depict woman at the tower and fence in the village landscape. Measurements is 30mm. by 38 mm. .Weight - 5.77 grams. From Gerardy Antique Collection, Paris, France.

PRICE - \$USD 79.00

**39x31 Landscape with a woman at the village street.
Circa 1880 Hand carved Great Light Sardonyx shell.**

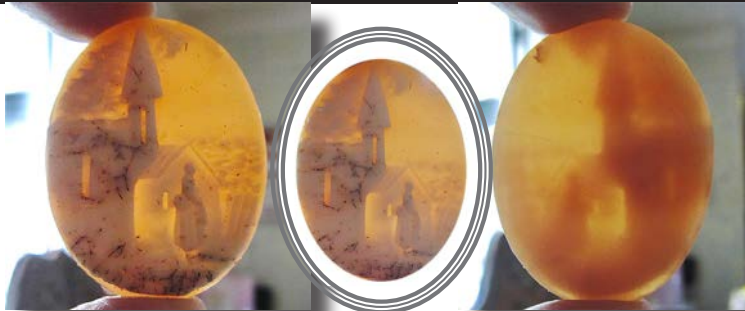


Made in 1865-1885 unmounted Sardonyx shell - woman in the village. Measurements is 39mm. by 31mm. . The perfect Antique condition from Gerardy Antique Collection, Paris, France, 1997.

PRICE - \$USD 159.00

27

**41x31(mm). Woman at the village church landscape
Circa 1870 well hand carved Gold Sardonyx shell.**



Made in circa 1870th unmounted gold Sardonyx hand carved Quality shell depict landscape of woman at the village church. Measurements is 41 mm. by 31 mm. Signed by the Artist .Weight - 7.7 grams. The perfect Antique condition from Gerardy Antique Collection, Paris, France.

PRICE - \$USD 149.00

28

**45x36 (mm). Woman at the village landscape with bridge at horizon.
Circa 1890 Great hand carved gold Sardonyx shell.**



Made in 1880th Sardonyx hand carved Quality shell depict woman at the village landscape. Measurements is 45mm. by 36 mm. . Weight - 7.24 grams. The perfect Antique condition from Gerardy Antique Collection, Paris, France.

PRICE - \$USD 139.00

29

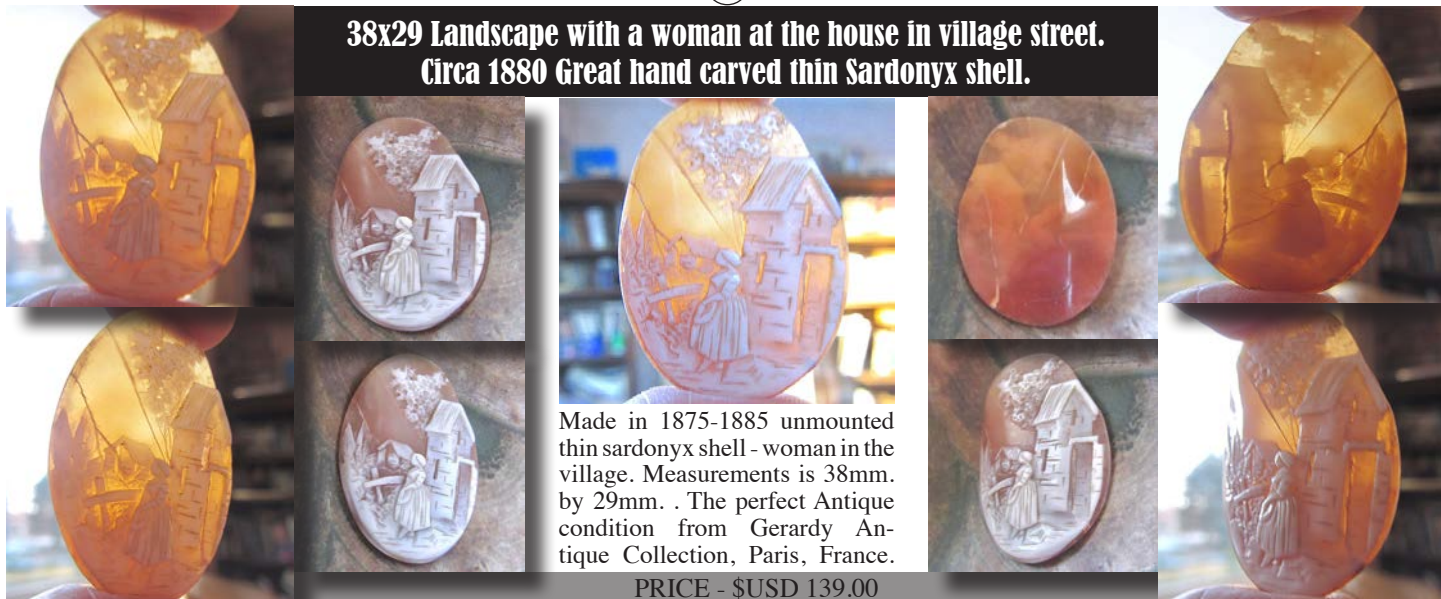
**46x37(mm). Woman at the perspective village landscape
Circa 1880 hand carved gold shell, signed by the Artist.**



Made in 1880th Museum Quality unmounted gold Sardonyx Shell depict landscape with a woman at the house in the village, with mounts on horizon. Measurements is 46 mm. by 37 mm. Signed by the Artist .Weight - 9.57grams From Gerardy Antique Collection, Paris, France.

PRICE - \$USD 199.00

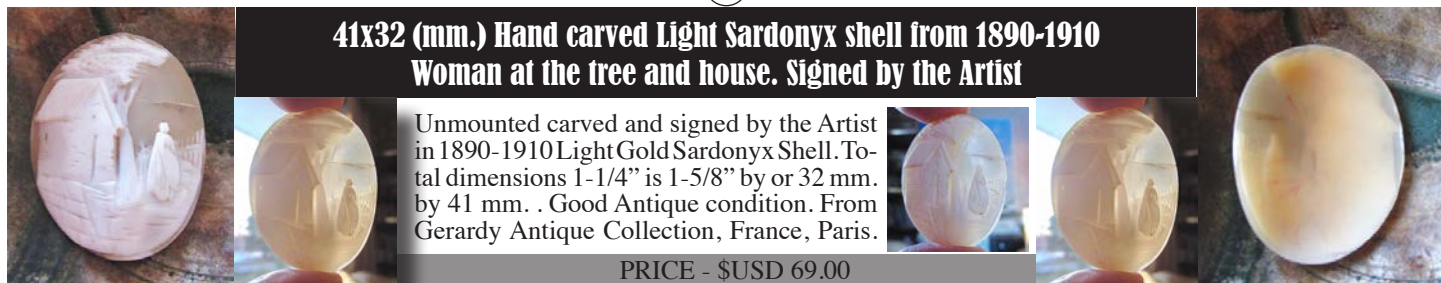
**38x29 Landscape with a woman at the house in village street.
Circa 1880 Great hand carved thin Sardonyx shell.**



Made in 1875-1885 unmounted thin sardonyx shell - woman in the village. Measurements is 38mm. by 29mm. . The perfect Antique condition from Gerardy Antique Collection, Paris, France.

PRICE - \$USD 139.00

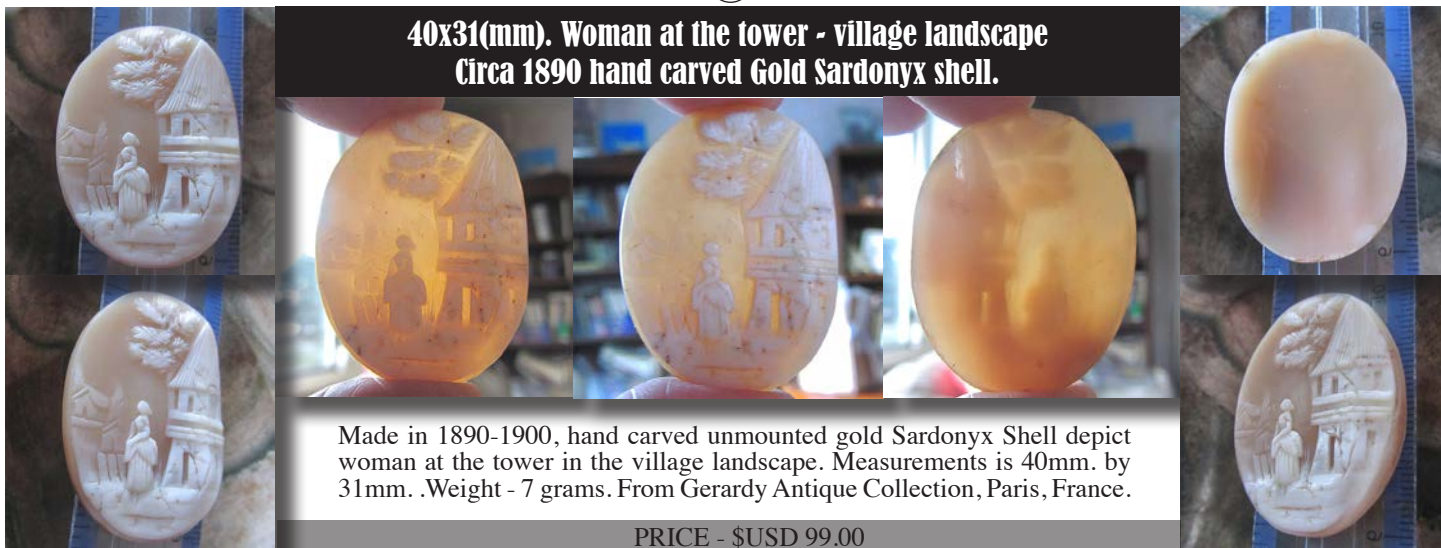
**41x32 (mm.) Hand carved Light Sardonyx shell from 1890-1910
Woman at the tree and house. Signed by the Artist**



Unmounted carved and signed by the Artist in 1890-1910 Light Gold Sardonyx Shell. Total dimensions 1-1/4" is 1-5/8" by or 32 mm. by 41 mm. . Good Antique condition. From Gerardy Antique Collection, France, Paris.

PRICE - \$USD 69.00

**40x31(mm). Woman at the tower - village landscape
Circa 1890 hand carved Gold Sardonyx shell.**



Made in 1890-1900, hand carved unmounted gold Sardonyx Shell depict woman at the tower in the village landscape. Measurements is 40mm. by 31mm. .Weight - 7 grams. From Gerardy Antique Collection, Paris, France.

PRICE - \$USD 99.00

**42x33 (mm.) Hand carved light Gold Sardonyx Shell circa 1880
Woman at the houses and trees in the village landscape.**



Unmounted big hand carved circa 1880 Light Gold Sardonyx Shell. Total dimensions 1-1/4" is 1-5/8" by or 33 mm. by 42 mm. . The perfect Antique condition from Gerardy Antique Collection, France, Paris.

PRICE - \$USD 125.00

**40x33 Village Landscape with lady at the tree and houses on horizon.
Circa 1880 Hand carved Light Sardonyx shell.**



Made in 1880th Unmounted Sardonyx Shell depict woman at the big tree in the country landscape at the horizon. The measurements is 40 mm. by 33 mm. . The reasonable Antique condition from Gerardy Antique Collection, Paris, France,

PRICE - \$USD 89.00

**42x33 (mm.) Hand carved Gold Sardonyx Shell circa 1880
Woman at the house in the bank of a river landscape.**

Unmounted big hand carved circa 1880 Gold Sardonyx Shell. Total dimensions is 1-1/4" by 1-5/8" or 33 mm. by 42 mm. . The perfect Antique condition from Gerardy Antique Collection, France, Paris.

PRICE - \$USD 85.00

**37x28 (mm.) Hand carved Gold Sardonyx Shell circa 1880
Woman at the house and tree in the village landscape.**

Unmounted hand carved circa 1880 Gold Sardonyx Shell. Total dimensions 1-1/8" is 1-1/2" by or 28 mm. by 37 mm. . The perfect Antique condition from Gerardy Antique Collection, France, Paris.

PRICE - \$USD 85.00

**49x40 (mm.) Circa 1880 Woman & Girl pastoral scene. Signed
Museum Quality Hand carved Gold Sardonyx shell.**



Circa 1880 Museum Quality hand carved and signed Sardonyx shell - Pastoral scene Woman & Girl . Measurements is 49mm. by 40mm. . The perfect Antique condition from Gerardy Antique Collection, Paris, France, 1997.

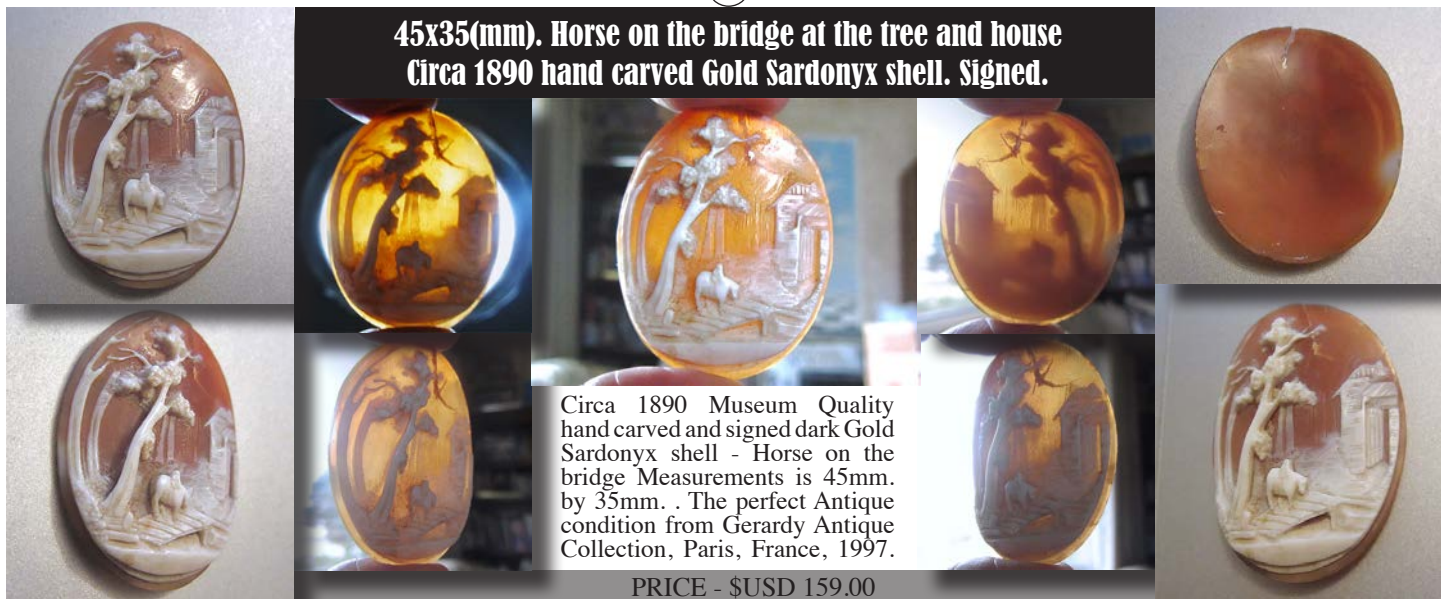
PRICE - \$USD 349.00

**35x44 (mm). Landscape with a woman at the village street.
Circa 1880 Great Hand carved Gold Sardonyx signed shell.**



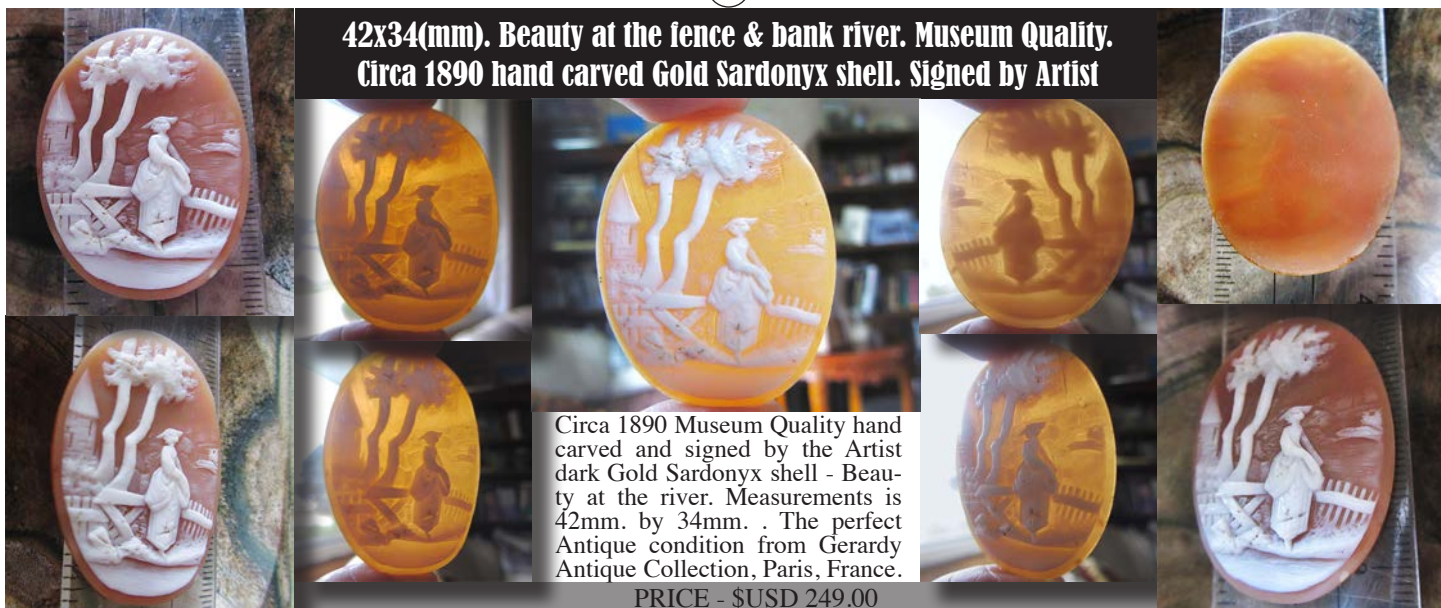
Circa 1880 hand carved & signed shell - woman in the village. Measurements is 35mm. by 44mm. . The perfect Antique condition from Gerardy Antique Collection, Paris, France.
PRICE - \$USD 179.00

**45x35(mm). Horse on the bridge at the tree and house
Circa 1890 hand carved Gold Sardonyx shell. Signed.**



Circa 1890 Museum Quality hand carved and signed dark Gold Sardonyx shell - Horse on the bridge Measurements is 45mm. by 35mm. . The perfect Antique condition from Gerardy Antique Collection, Paris, France, 1997.
PRICE - \$USD 159.00

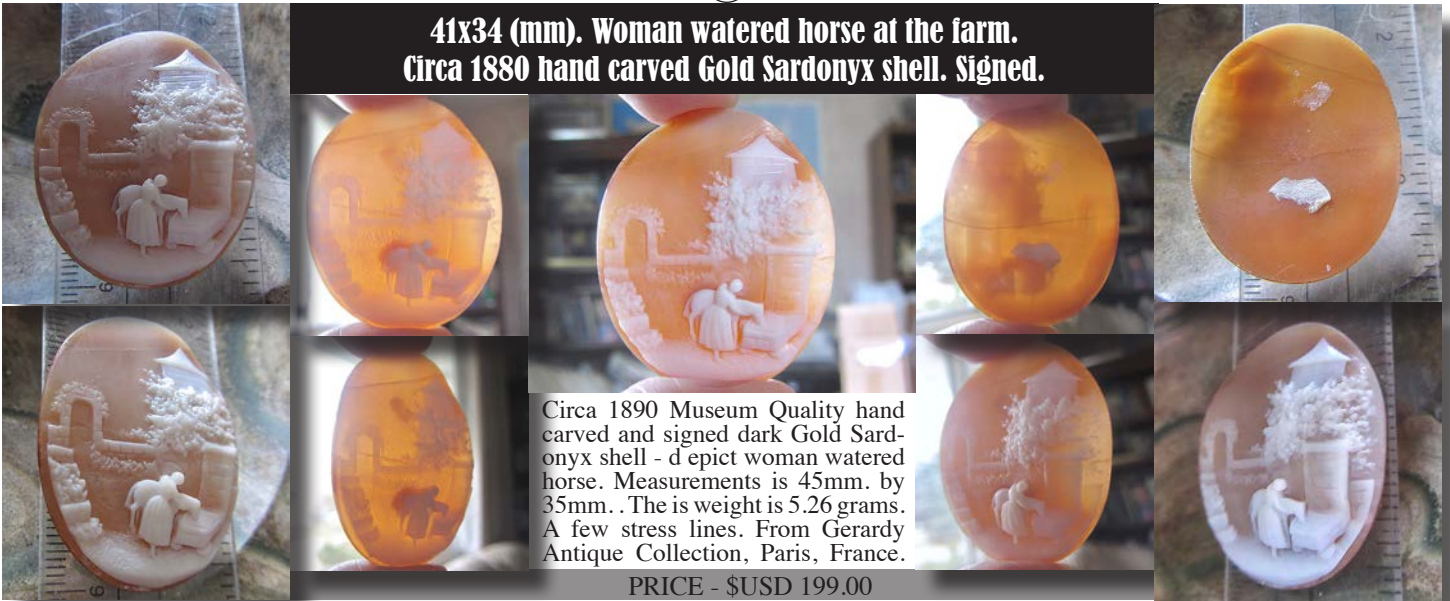
**42x34(mm). Beauty at the fence & bank river. Museum Quality.
Circa 1890 hand carved Gold Sardonyx shell. Signed by Artist**



Circa 1890 Museum Quality hand carved and signed by the Artist dark Gold Sardonyx shell - Beauty at the river. Measurements is 42mm. by 34mm. . The perfect Antique condition from Gerardy Antique Collection, Paris, France.
PRICE - \$USD 249.00



**41x34 (mm). Woman watered horse at the farm.
Circa 1880 hand carved Gold Sardonyx shell. Signed.**



Circa 1890 Museum Quality hand carved and signed dark Gold Sardonyx shell - depict woman watered horse. Measurements is 45mm. by 35mm. . The is weight is 5.26 grams. A few stress lines. From Gerardy Antique Collection, Paris, France.

PRICE - \$USD 199.00



**40x31 (mm.) Woman at the forest landscape scene.
Circa 1880 Hand carved Dark Sardonyx shell.**

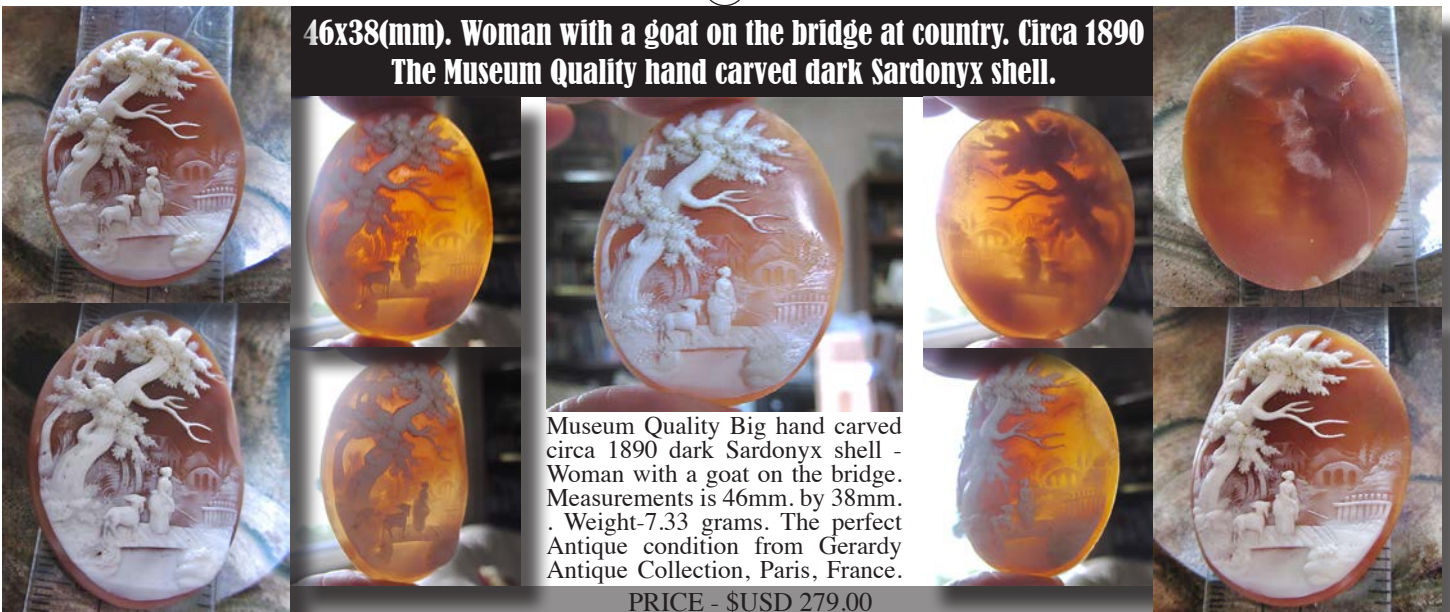


Made in 1880th Unmounted dark Sardonyx Shell depict woman at the forest in the country landscape. The measurements is 40 mm. by 31 mm. . The reasonable Antique condition from Gerardy Antique Collection, Paris, France,

PRICE - \$USD 129.00



**46x38(mm). Woman with a goat on the bridge at country. Circa 1890
The Museum Quality hand carved dark Sardonyx shell.**

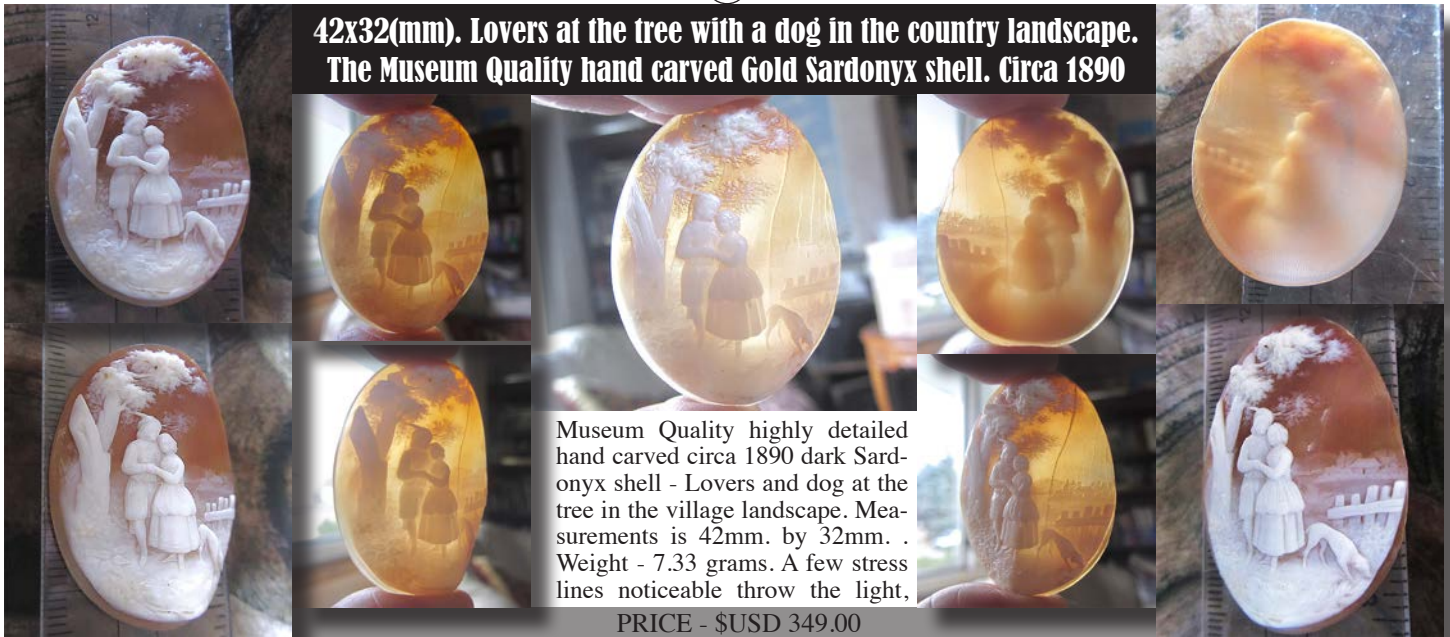


Museum Quality Big hand carved circa 1890 dark Sardonyx shell - Woman with a goat on the bridge. Measurements is 46mm. by 38mm. . Weight-7.33 grams. The perfect Antique condition from Gerardy Antique Collection, Paris, France.

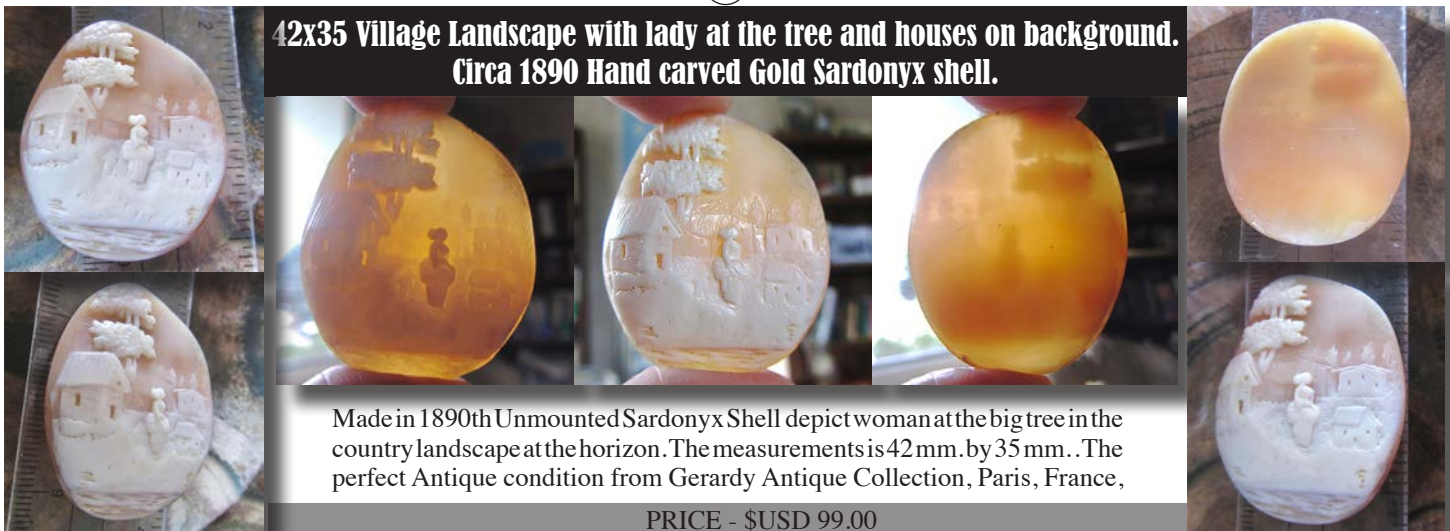
PRICE - \$USD 279.00



**42x32(mm). Lovers at the tree with a dog in the country landscape.
The Museum Quality hand carved Gold Sardonyx shell. Circa 1890**



**42x35 Village Landscape with lady at the tree and houses on background.
Circa 1890 Hand carved Gold Sardonyx shell.**



**37x31(mm.) Village couple at the tree and houses on background.
Circa 1890 Hand carved & signed Gold Sardonyx shell.**



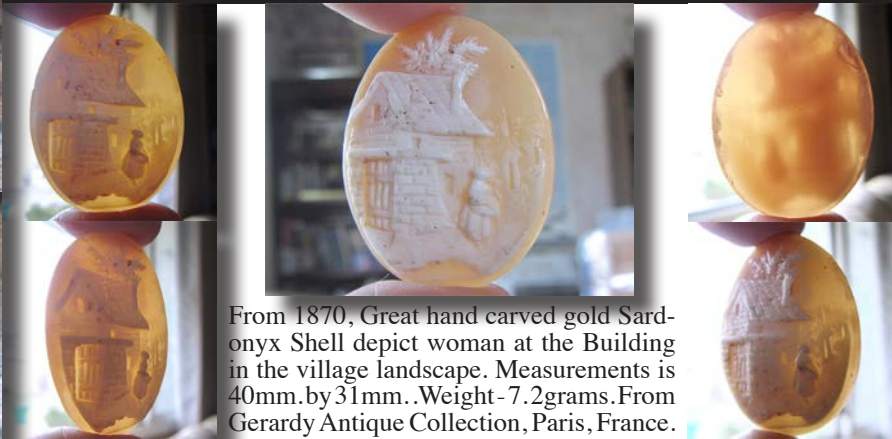
**38x31 Village Landscape with lady at the tree and house on background.
Circa 1890-1910 Hand carved Gold Sardonyx shell.**



Made in 1890th Unmounted Sardonyx Shell depict woman at the tree and house in the country landscape at the horizon. The measurements is 38 mm. by 31 mm. . The perfect Antique condition from Gerardy Antique Collection, Paris, France,

PRICE - \$USD 139.00

**39x30(mm). Woman at the house landscape circa 1870
Detailedly hand carved light Gold Sardonyx shell.**



From 1870, Great hand carved gold Sardonyx Shell depict woman at the Building in the village landscape. Measurements is 40mm. by 31mm. .Weight - 7.2grams. From Gerardy Antique Collection, Paris, France.

PRICE - \$USD 199.00

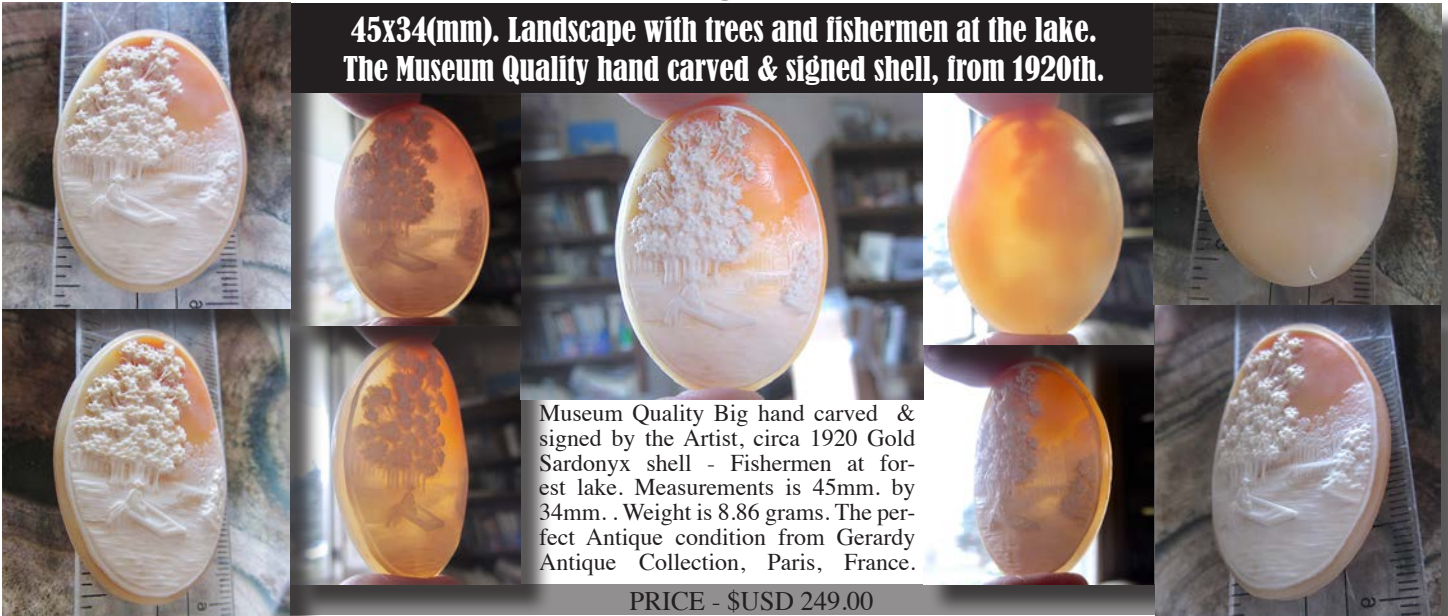
**50x38(mm). Landscape with three trees and yacht in the in the water.
The Museum Quality hand carved & signed Gold shell, from 1920th.**



Museum Quality Big hand carved & signed by the Artist, circa 1920 Gold Sardonyx shell - 3 trees at the river bank and yacht in water. Measurements is 50mm. by 38mm. . Weight is 7 grams. The perfect Antique condition from Gerardy Antique Collection, Paris, France.

PRICE - \$USD 279.00

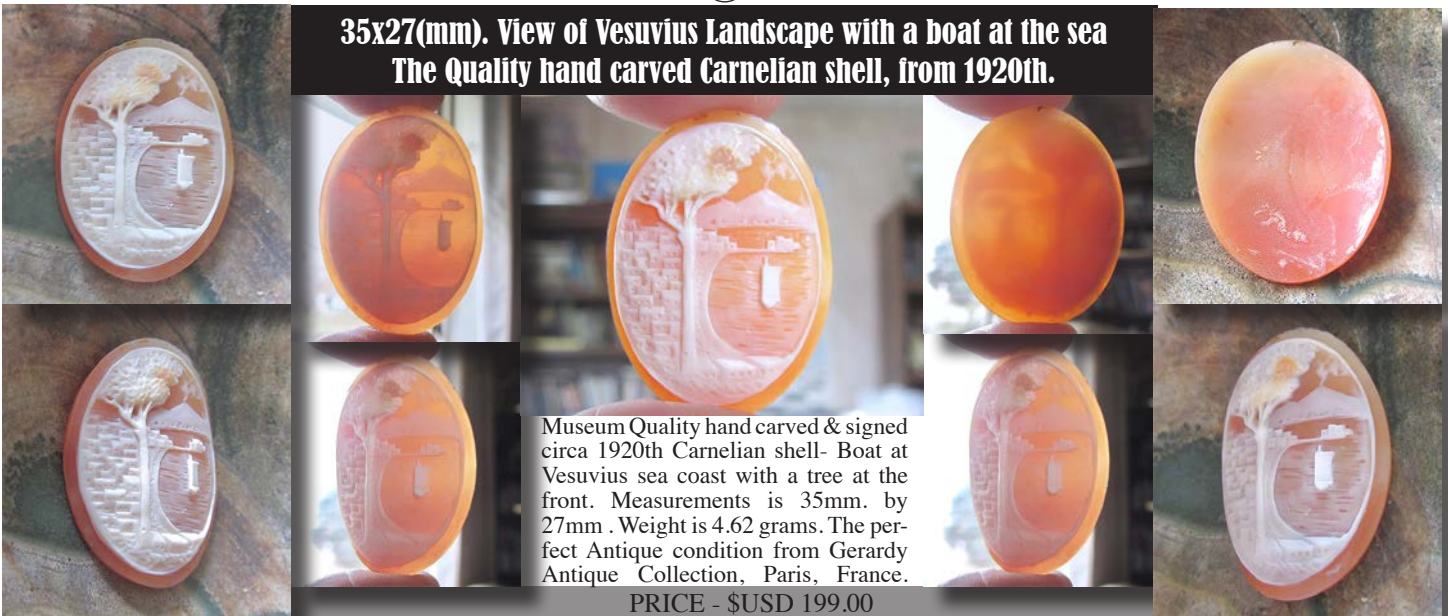
**45x34(mm). Landscape with trees and fishermen at the lake.
The Museum Quality hand carved & signed shell, from 1920th.**



Museum Quality Big hand carved & signed by the Artist, circa 1920 Gold Sardonyx shell - Fishermen at forest lake. Measurements is 45mm. by 34mm. . Weight is 8.86 grams. The perfect Antique condition from Gerardy Antique Collection, Paris, France.

PRICE - \$USD 249.00

**35x27(mm). View of Vesuvius Landscape with a boat at the sea
The Quality hand carved Carnelian shell, from 1920th.**



Museum Quality hand carved & signed circa 1920th Carnelian shell- Boat at Vesuvius sea coast with a tree at the front. Measurements is 35mm. by 27mm. . Weight is 4.62 grams. The perfect Antique condition from Gerardy Antique Collection, Paris, France.

PRICE - \$USD 199.00

**40x30(mm). Landscape with Vesuvius view in Italy
Circa 1930 hand carved white/orange shell.**



Great Quality hand carved & signed circa 1930th white/orange shell. Boat at Vesuvius sea coast with a tree at the front. Measurements is 40mm. by 30mm. . Weight is 4.36 grams. The perfect Antique condition from Gerardy Antique Collection, Paris, France.

PRICE - \$USD 129.00

53

**35x27(mm). Depict Landscape of tree, fence and arch circa 1910
High Quality hand carved & signed by Artist Carnelian shell.**



Made in 1900-1920th Carnelian Shell depict landscape - Arch and fence with tree and bushes at the front. The measurements is 35 mm. by 27 mm. .Weight - 6.25 grams. The perfect Antique condition from Gerardy Antique Collection, Paris, France,

PRICE - \$USD 149.00

54

**25x19(mm). Landscape with St. Peter's Basilica Italy
Circa 1930 hand carved multi colored shell.**



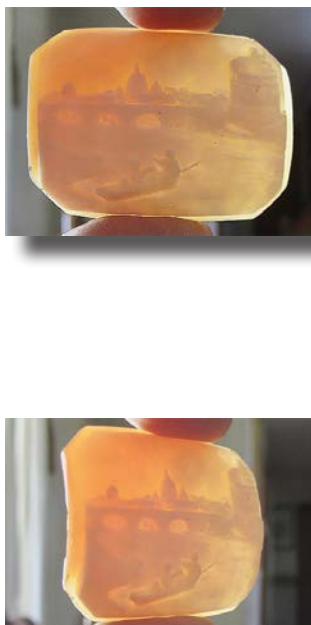
Circa 1930th Good Quality unmounted multi colored Sardonyx Shell depict landscape with St. Peter's Basilica in Rome, Italy. Measurements is 25 mm. by 19 mm. .Weight - 1.66 grams From Gerardy Antique Collection, Paris, France.



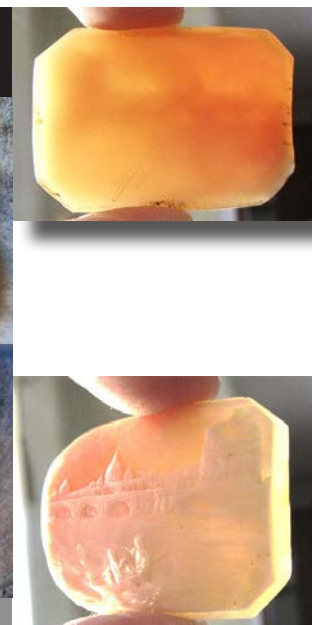
PRICE - \$USD 129.00

55

**40x30(mm). View of Rome with St. Peter's Basilica & Coliseum
Landscape of Circa 1880 hand carved octagon shell.**



Circa 1880, great detail and quality carving unmounted Shell depict landscape with Coliseum and St. Peter's Basilica in Rome, Italy. Boat with a two figures sailing in the Tiber river in the front Measurements is 40 mm. by 30mm. Signed by the Artist. Weight - 7.66 grams From The Gerardy Antique Collection, Paris, France.



PRICE - \$USD 179.00

**37x27 Village Landscape with lady at the tree and house on background.
Circa 1880-1890 Hand carved Light Sardonyx shell.**



Made in 1880th Unmounted Sardonyx Shell depict woman at the tree and house in the country landscape at the horizon. The measurements is 37mm. by 27mm. Weight is 3.56 grams. The perfect Antique condition from Gerardy Antique Collection, Paris, France,

PRICE - \$USD 99.00

**40x32 Landscape with lady at the house and bridge on background.
Circa 1880-1890 Hand carved Light Sardonyx shell.**



Made in 1880th Unmounted light Sardonyx Shell depict woman at the house with bridge and mounts at the horizon. The measurements is 40mm. by 32 mm. Weight is 5.62 grams. The perfect Antique condition from Gerardy Antique Collection,

PRICE - \$USD 99.00

**52x40(mm). Woman with a goat at the village landscape.
The Museum Quality hand carved light Sardonyx shell Circa 1880.**



Museum Quality Big hand carved circa 1890 light shell - Woman with a goat at village landscape. Measurements is 52mm. by 40mm. . Weight-8.73 grams. The perfect Antique condition from Gerardy Antique Collection, Paris, France.

PRICE - \$USD 249.00



20x15 (mm.) Hand carved dark Sardonyx circa 1960
The house in the bank of a river landscape.

Unmounted big hand carved circa 1960 Gold Sardonyx Shell. Total dimensions is 13/16" by 9/16" or 20 mm. by 15 mm. . The perfect Antique condition from Gerardy Antique Collection, France, Paris.

PRICE - \$USD 75.00



40x32(mm). Woman at the tree and perspective landscape
Circa 1880 hand carved Sardonyx shell, signed.

Made in 1880th Quality unmounted gold Sardonyx Shell depict landscape with a woman at the tree in the village, with houses on horizon. Measurements is 40 mm. by 32 mm. Signed .Weight - 5.38 grams From Gerardy Antique Collection, Paris, France.

PRICE - \$USD 129.00



39x32 (mm.) Hand carved light Gold Sardonyx Shell circa 1880
Woman at the Roman colonne in the village landscape.

Hand carved/signed circa 1880 light Gold Sardonyx Shell. Total dimensions 1-1/4" is 1-1/2" by or 32 mm. by 39 mm. . The good Antique condition from Gerardy Antique Collection, France, Paris.

PRICE - \$USD 99.00



32x25 (mm.) Detailedly Hand carved/signed Gold Sardonyx Shell
Circa 1880 Village landscape - Woman at the house and tree.

Very detailing hand carved/signed by the Artist in circa 1870-1880 light Gold Sardonyx Shell. Total dimensions 1-1/4" is 1" by or 32 mm. by 25 mm. . The good Antique condition from Gerardy Antique Collection, France, Paris.

PRICE - \$USD 139.00



40x32 (mm.) Hand carved light Gold Sardonyx Shell circa 1880
Woman at the houses and tree in the village landscape.

Unmounted big hand carved circa 1880 Light Gold Sardonyx Shell. Total dimensions 1-1/4" is 1-9/16" by or 40 mm. by 32 mm. . The perfect Antique condition from Gerardy Antique Collection, France, Paris.

PRICE - \$USD 99.00



64

**45x35(mm). Great landscape with bridge, houses, trees & mountains
Circa 1890 hand carved Leopard Gold Sardonyx shell.**



Made in 1890th Quality gold Sardonyx Shell depict landscape with houses, trees & bridge in the middle, with mountains on horizon. Measurements is 45 mm. by 35 mm. .Weight - 6.28 grams From Gerardy Antique Collection, Paris, France.

PRICE - \$USD 149.00

65

**22x14 (mm.) Museum Quality Tiny light Gold Sardonyx Shell
Woman at the tower and tree in the village landscape 1870th.**



Unmounted microscopically detailed hand carved tiny circa 1870 -1880 light Gold Sardonyx Shell. Total dimensions is 7/8" by 9/16" or 22 mm. by 14 mm. .Weight - 1.11grams. The perfect Antique condition from Gerardy Antique Collection, France, Paris.

PRICE - \$USD 99.00

66

**21x13 (mm.) Museum Quality Tiny Gold Sardonyx Shell
Woman at the tower and tree in the village landscape 1870th.**



Unmounted microscopically detailed hand carved tiny circa 1870 -1880 light Gold Sardonyx Shell. Total dimensions is 7/8" by 9/16" or 21 mm. by 13 mm. .Weight - 1.11grams. The perfect Antique condition from Gerardy Antique Collection, France, Paris.

PRICE - \$USD 99.00

67

**13x11 (mm.) Museum Quality Amazingly detailing tiny Gold Shell
Woman at the tower and tree in the village landscape 1870th.**



Unmounted microscopically detailed hand carved tiny circa 1870 -1880 light Gold Sardonyx Shell. Total dimensions is 1/2" by 7/16" or 13 mm. by 11 mm. .Weight - 0.29 grams. The perfect Antique condition from Gerardy Antique Collection, France, Paris.

PRICE - \$USD 99.00

68

**36x26(mm). Landscape with Vesuvius view in Italy
Circa 1930 hand carved light shell from France.**



Hand carved & signed circa 1930th light shell. Boats at Vesuvius sea coast Measurements is 36mm. by 26mm. Weight is 6.74 grams. The perfect Antique condition from Paris, France.

PRICE - \$USD 99.00



**37x30 (mm.) Hand carved dark Shell circa 1880
Woman at the village landscape circa 1870.**



Hand carved circa 1870 - 1880 Dark Sardonyx Shell. Total dimensions 1-7/16" is 1-1/8" by or 37mm. by 30 mm. . The good Antique condition from Gerardy Antique Collection, France, Paris.

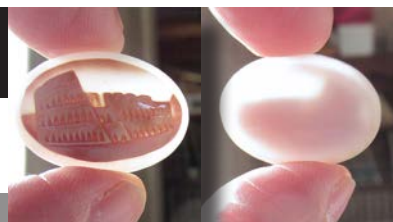
PRICE - \$USD 99.00



**25x18 (mm). Italian Coliseum Landscape
1930th hand carved multi colored shell.**

(54) Circa 1930th multi colored shell depict Coliseum in Rome, Italy. Measurements is 25 mm. by 18 mm. .Weight - 1.9 grams From Gerardy Collection.

PRICE - \$USD 69.00



**25x19 (mm). Indian Taj Mahal Landscape
Circa 1930th (?) hand carved shell.**

(54)(70) Circa 1930th shell depict Taj Mahal in India. Measurements is 25mm. by 19mm. .Weight - 2.16 grams From Gerardy Collection.

PRICE - \$USD 49.00

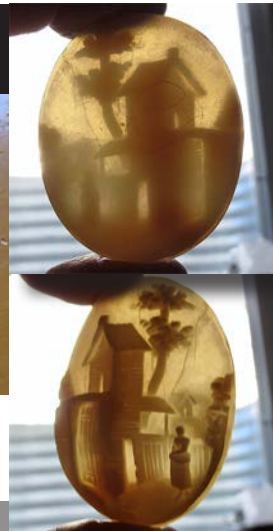


**44x36(mm).Perspective country landscape-woman at the tower
Circa 1890 hand carved/signed light Sardonyx shell.**



Made in 1880-1900, Museum hand carved unmounted light gold Sardonyx Shell depict woman at the tower in the village landscape. Measurements is 44mm. by 36mm. .Weight - 5.76 grams. From Gerardy Antique Collection, Paris, France.

PRICE - \$USD 159.00



**41x32 (mm.) Hand carved Light Sardonyx shell from 1890-1910
Woman at the river tree and fence. Signed by the Artist**

Unmounted carved by the Artist in 1890-1910 Light Gold Sardonyx high relief shell. Total dimensions 1-1/4" is 1-5/8" by or 32 mm. by 41 mm. Weight is 6.29 grams. Good Antique condition. From Gerardy Antique Collection, France, Paris (31).

PRICE - \$USD 79.00



74

**40x33(mm). Woman at the river bank country landscape
Circa 1870 hand carved/signed light Sardonyx shell.**



Made in 1850 -1890, Museum hand carved unmounted light gold Sardonyx Shell depict woman at the river bank village landscape. Measurements is 40mm. by 33mm. .Weight -4.63 grams. From Gerardy Antique Collection, Paris, France.

PRICE - \$USD 159.00

75

**25x18(mm.) Very Old 1860-1880 Shell
Buildings at the tree landscape.**



A nicely carved Antique Victorian petite Shell depict detailing landscape from second part of XIX century. This measures 1" with overall and tall size of the Cameo is 3/4". Shell is in good condition (1).

PRICE - \$USD 79.00

76

**35x27 Village Landscape with lady at the tree.
Circa 1880-1890 Hand carved Sardonyx shell.**



Made in 1880th Unmounted Sardonyx Shell depict woman at the tree in the country landscape at the horizon. The measurements is 37mm. by 27 mm. Weight is 5.22 grams. The perfect Antique condition from Gerardy Antique Collection, Paris, France (56),

PRICE - \$USD 99.00



**55x42(mm.) Museum Quality Young traveler at the river bank
1850th - 1870th carved/signed shell from UK Collection.**



Museum Quality carved shell - man at landscape. Weight is 14 grams. Measurements - 55 by 42 (mm). Circa 1850th - 1870th. Antique from UK collection.

PRICE - \$USD 329.00



**40x31 (mm.) Hand carved & signed Italian girl at the sea
1920th - 1930th Museum Art Deco multicolored shell.**

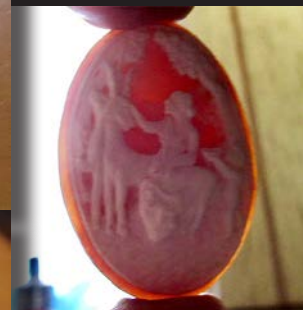


Best Quality carved/signed Italian multicolored Post WWI shell - girl at sea. Weight 5.43 gr., measurements 40 by 31 (mm). Circa 1920th-1930th. Perfect from US Collection (617).

PRICE - \$USD 229.00

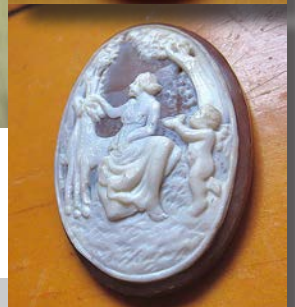


**40x30 (mm.) Carved Goddess Diana/Cupped with a deers in forest
1910th - 1930th Quality carved Art Deco brown Sardonyx shell.**



Best Quality carved thick brown Sardonyx shell - Goddess(Diana?) with a deers & cupped in a forest. Weight 9.16 gr., measurements 40 by 31 (mm). Circa 1910th -1930th. Perfect from US Collection

PRICE - \$USD 179.00



**35x26 Village Landscape with lady & sheep at the tree.
Circa 1880-1890 well hand carved Gold shell.**



Carved in 1880th unmounted shell depict woman at the tree with a sheep landscape at the horizon. The measurements is 35 mm. by 26 mm. Weight is 3.46 grams. The perfect Antique condition from Paris, France(56)(76),

PRICE - \$USD 119.00